

# ICECAPS-ACE Weekly Report

October 14 – October 20, 2019

Jess Ackerman



*Left: ICECAPS Technician Jess Ackerman refilling the butanol on the CPC for the ACE experiment. 10-14. Right: MSF sunrise 0734. 10-18.*

## General Notes:

On October 17<sup>th</sup> the Twin Otter departed with 6 PFS staff, leaving the final 4 staff for the winter. Since then, the pace has not slowed and the learning curve has been exponential for all. There were 2 brief minute-long planned power outages on 2019-10-15 at 1310 and 1318. Notable ICECAPS events this week included troubleshooting the Data Management transfers to Boulder and a “third time is the charm” successful reboot for the MMCR.

## General Weather Observations:

Date	Time (Z)	Wind	Weather	Visibility	Sky	Temp	Notes
10-14	12	150°, 12 kn		3200	FEW	-38	
10-15	12	181°, 7 kn		3200	FEW098	-38	FZFG distant.
10-16	12	211°, 10 kn		800	FEW131	-42	Cirrus.
10-17	12	232°, 13 kn	FZFG -SN	800	OVC005	-24	Stratus.
10-18	12	215°, 11 kn		4800	FEW098	-32	Cirrostratus.
10-19	12	245°, 11 kn		1600	FEW	-33	Stratus distant.
10-20	12	269°, 3 kn		4800	SCT025	-38	Stratus. BR distant.

**Flight operations:**

- 10-17 1530-1607z: Twin otter at Summit.

**Significant Weather Observations:**

- 10-14 2045z: Rave Ice
- 10-16 1103z: Fog bow
- 10-19 1045-1145z: Fog bow
- 10-20 1343-1350z: Fog bow

**MSF**

- Operating normally.

**ICECAPS-ACE Data Management:**

- 10-14: Data transfer completed at 0554z.
- 10-15: Data transfer completed at 0525z.
- 10-16: Data transfer completed at 0523z.
- 10-17: Data transfer completed at 0420z.
- 10-18: Data transfer completed at 0630z.
- 10-19: Data transfer completed at 0844z.
- 10-20: Data transfer completed at 1048z.

Several errors on DataMan after 10-16, causing the abnormal times above. Apparently, ICECAPS data transfers to Boulder were not taking place because the mount name for the USB backup drive was incorrect after a routine swap of these drives during turnover. Collaborative troubleshooting occurred. Standing by to see if things improve on 10/22 daily checks.

**MWR:**

- 10-16 1205z: Light frost cleared from 150-90 window. Photo taken and logged. Also, an exposed wire on the GPS component was re-wrapped and secured with rubber mastic tape.
- Operating normally.

**SODAR:**

- 10-15 1632-1654z: Cleaned and levelled.
- Operating normally.

**POSS:**

- Operating normally.

**MMCR:**

- 10-18 1723-1900z: After continuous NetCDF errors (starting 10-16 1242z) would not stay cleared, rebooted the system 3x.

**CAPABL:**

- 10-17 1351-1405z: Turned off laser to clear window.
- Operating normally.

**MPL:**

- 10-15 1825-1854z: Monthly calibration completed.
- Operating normally

**VCEIL:**

- Operating normally.

**IceCAM:**

- Operating normally

**PAERI:**

- 10-14 1235z: Fan unplugged briefly for training.
- 10-17 1333 and 1344z: Scene mirror cleaned for training.
- Operating normally

**TSI:**

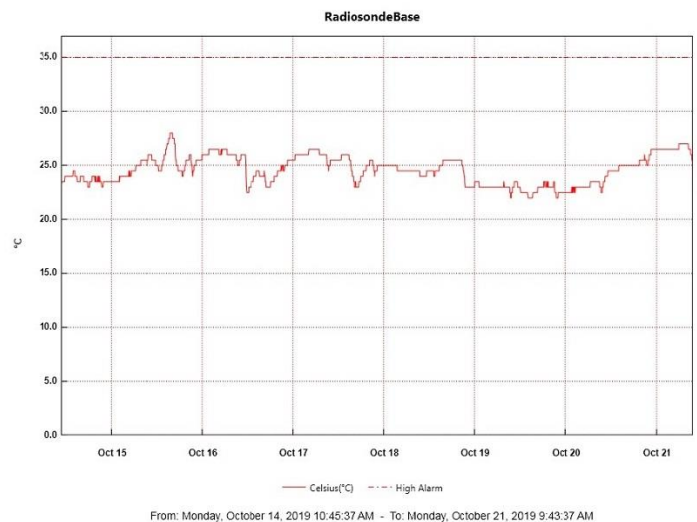
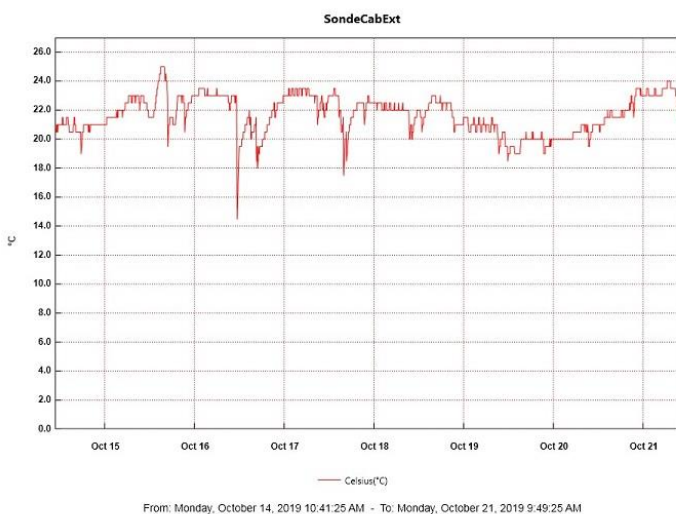
- Offline for winter season,

**IcePIC:**

- 10-15: Used equipment for training.
- No IcePics this week.

**Radiosonde:**

- Twice daily launches.
- See charts below for temperatures inside and outside the enclosure over the last week.



**MASC:**

- 10-15 1337z: Computer rebooted due to unresponsive trackpad.
- Operating normally.

**MSF - OPC:**

- Operating normally.

**TAWO – OPC:**

- Operating normally.

**SKYOPC:**

- Operating normally.

**CLASP:**

- Operating normally.

**CPC:**

- 10-14 1415z: Butanol refilled and condensate emptied.
- Operating normally.

**Fluxtower instrument suite:**

- 10-17 0800-1530z: Fluxtower data interrupted due to TAWO network outage.

**INP Freezing Assay:**

- 10-15 1816z: Coldstage calibrations performed.
- 10-16 1308z: Three filter samples collected from TAWO and weekly sample assays run.