

ICECAPS-ACE Weekly Report

June 15 – June 21, 2020

Ian Geraghty



Raising the SODAR stand on June 19, 2020. Photos by Austin Danicic.

General Notes:

The raising of the SODAR and the completion of other minor tasks made for a productive week. The raising of tower instruments will be the primary focus for the next couple of weeks.

General Weather Observations:

Date	Time (Z)	Wind	Weather	Visibility	Sky	Temp (C)	Notes
06-15	12	21kts from 112	BR DRSN	4800	SCT015 BKN050 BKN130	-15	
06-16	12	18kts from 109	BR DRSN	1600	SCT000 SCT032 BKN130	-13	
06-17	12	10kts from 172		9999	BKN023	-15	
06-18	12	10kts from 163	IC	9999	FEW008	-15	22° halo with parhelic circle
06-19	12	11kts from 144	BR	4800	SCT015	-14	
06-20	12	7kts from 76		9999	FEW032	-16	
06-21	12	16kts from 148	DRSN	3200	OVC030	-10	

Significant Weather Observations:

- 2020-06-18 0900 – 1116Z: 22° halo with parhelia and parhelic circle seen in TSI photos.

MSF

- 2020-06-15 1110 – 1250Z: Drifting snow to the north of MSF removed.
- 2020-06-19 1145 – 1815Z: Drifting snow to the north of MSF removed.

ICECAPS-ACE Data Management:

- 06-15: Data transfer completed at 0452Z.
- 06-16: Data transfer completed at 0450Z.
- 06-17: Data transfer completed at 0453Z.
- 06-18: Data transfer completed at 0515Z.

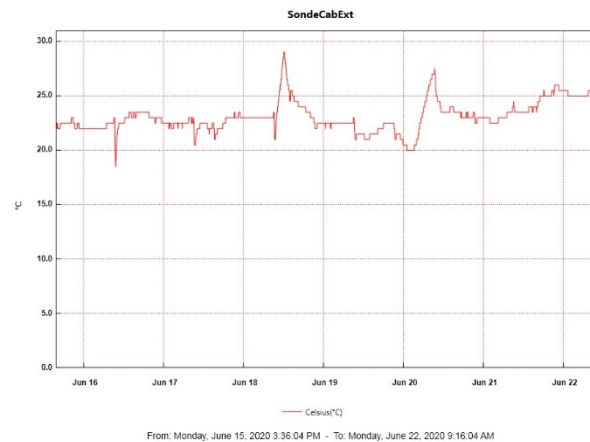
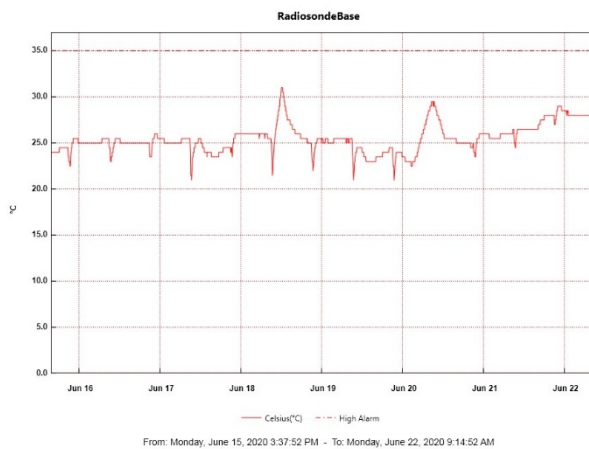
- 06-19: Data transfer completed at 0449Z.
- 06-20: Data transfer completed at 0447Z.
- 06-21: Data transfer completed at 0452Z.

TSI:

- 2020-06-16: Software rebooted to reinitialize image processing.
- 2020-06-17: Software rebooted to reinitialize image processing.
- 2020-06-18: Software rebooted to reinitialize image processing.
- 2020-06-19: Software rebooted to reinitialize image processing.
- Operational.

Radiosonde:

- No SPS connectivity issues occurred this week.
- See charts below for temperatures inside and outside the radiosonde cabinet over the last week.



MWR:

- 2020-06-17 1100 – 1121Z: Rec. 1 temperature stability flag went red.
- HATPRO offsite for repairs. 150-90 online and operating normally.

SODAR:

- 2020-06-15 1216 – 1417Z: SODAR shutdown for snow removal.
- 2020-06-19 1144 – 1837Z: SODAR stand raised. Dishes cleaned and leveled.
- Operating normally.

POSS:

- Offline. Troubleshooting with manufacturer ongoing.

MASC:

- Operating normally.

MMCR:

- 2020-06-17 1200 – 1500Z: Radar monitor had DwellControl_Calibration error after daily calibration. Error cleared at 1455Z.
- 2020-06-20 0600Z: LapXM started getting recurring “Could not read calibration table NetCDF file” error messages.
- Operating normally. Monitoring transmitter power fluctuations.

CAPABL:

- 2020-06-18 1900 – 2030Z: Laser 2 flashlamp change.
- Operating normally.

MPL:

- 2020-06-15 1801 – 1833Z: Monthly afterpulse calibration completed.
- Operating normally. Monitoring laser energy fluctuations.

CEILOMETER:

- Operating normally.

PAERI:

- 2020-06-20: Outside air temperature thermistor replaced.
- Operating normally.

IceCAM:

- Operating normally.

IcePIC:

- No IcePICs taken this week.

CLASP:

- Offline.

CPC:

- Offline.

MSF - OPC:

- Operating normally.

TAWO - OPC:

- Operating normally.

SKYOPC:

- 2020-06-17 1713Z: Data acquisition restarted after new pump was installed.
- Operating normally.

INP Freezing Assay:

- 2020-06-17: Weekly experiments completed. Cold stages auto-calibrated.

Fluxtower instrument suite:

- Operating normally.

Radiometers:

- 2020-06-15: Completed weekly data download.
- Operating normally.