

ICECAPS-ACE Weekly Report

June 22 – June 28, 2020

Ian Geraghty



Mara hauling tower equipment out to TAWO on June 26.

General Notes:

Tower work for the summer season has commenced with the raising of the KT15 and some of the NOAA equipment.

General Weather Observations:

Date	Time (Z)	Wind	Weather	Visibility	Sky	Temp (C)	Notes
06-22	12	5kts from 045	-SN	4800	OVC023	-8	
06-23	12	9kts from 045	-SN	9999	OVC017	-6	
06-24	12	5kts from 155	BR -SN	4800	BKN015 BKN064	-10	
06-25	12	16kts from 273	BR -SN	3200	SCT015 BKN040	-11	
06-26	12	4kts from 134	IC	9999	SCT032 BKN164	-14	
06-27	12	9kts from 128		9999	FEW032 FEW064	-17	Clouds distant; height estimated
06-28	12	12kts from 080		9999	SCT082 BKN196	-13	

Significant Weather Observations:

- None

MSF

- None

ICECAPS-ACE Data Management:

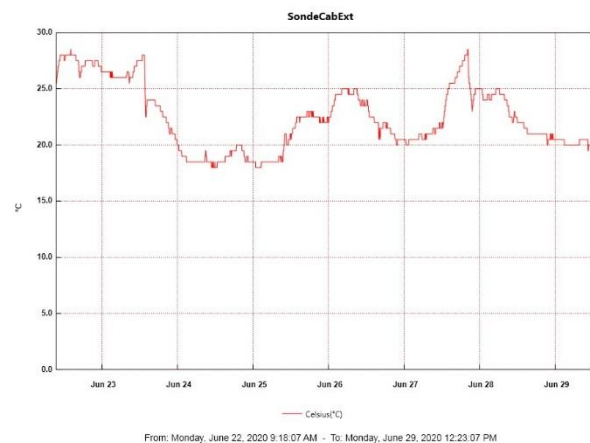
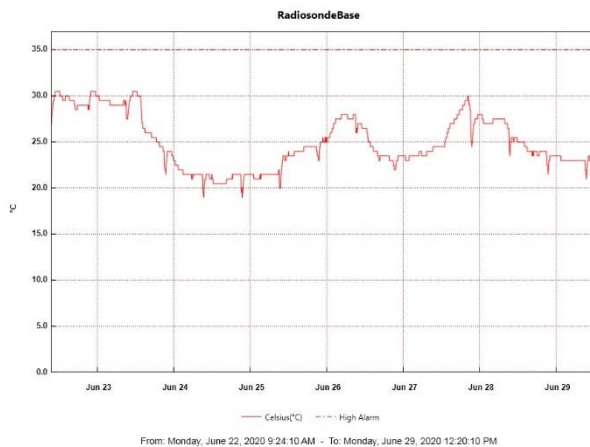
- 06-22: Data transfer completed at 0453Z.
- 06-23: Data transfer completed at 0449Z.
- 06-24: Data transfer completed at 0540Z.
- 06-25: Data transfer completed at 0522Z.
- 06-26: Data transfer completed at 0551Z.
- 06-27: Data transfer completed at 0504Z.
- 06-28: Data transfer completed at 0449Z.

TSI:

- 2020-06-25: Software rebooted to reinitialize image processing.
- Operational.

Radiosonde:

- No SPS connectivity issues occurred this week.
- See charts below for temperatures inside and outside the radiosonde cabinet over the last week.



MWR:

- HATPRO offsite for repairs. 150-90 online and operating normally.

SODAR:

- 2020-06-22 1600 - 1608: Cleaned SODAR dishes.
- Operating normally.

POSS:

- 2020-06-27: POSS data cable passed continuity test.
- Offline. Troubleshooting with manufacturer ongoing.

MASC:

- Operating normally.

MMCR:

- 2020-06-22 1714 – 1850Z: Full system reboot to resolve NetCDF errors.
- Operating normally. Monitoring transmitter power fluctuations.

CAPABL:

- Operating normally.

MPL:

- Operating normally. Monitoring laser energy fluctuations.

CEILOMETER:

- Operating normally.

PAERI:

- Operating normally.

IceCAM:

- Operating normally.

IcePIC:

- No IcePICs taken this week.

CLASP:

- Offline.

CPC:

- Offline.

MSF - OPC:

- Operating normally.

TAWO - OPC:

- Operating normally.

SKYOPC:

- Operating normally.

INP Freezing Assay:

- 2020-06-24: Weekly experiments completed. Cold stages auto-calibrated.

Fluxtower instrument suite:

- 2020-06-26: KT15 raised.
- Operating normally.

Radiometers:

- 2020-06-22: Completed weekly data download.
- Operating normally.