

# ICECAPS-ACE Weekly Report

July 6 – July 12, 2020

Ian Geraghty



*Some of the southbound cargo staged at the MSF.*

## General Notes:

This week the SnD and Metek1/HMP1/LiCOR booms on the MET tower were raised and southbound science cargo was prepared for retro.

## General Weather Observations:

Date	Time (Z)	Wind	Weather	Visibility	Sky	Temp (C)	Notes
07-06	12	3kts at 1235		9999	BKN061 BKN082	-12	
07-07	12	9kts at 114		9999	BKN011	-13	
07-08	12	10kts at 064		9999	BKN015	-12	
07-09	12	10kts at 160	BR	4800	OCV008	-10	
07-10	12	10kts at 228	BR	4800	SCT008 BKN065	-6	
07-11	12	17kts at 078		9999	OVC010	-5	
07-12	12	15kts at 046	IC	1600	BKN015 BKN050	-11	

### Significant Weather Observations:

- None

### MSF

- Consulting with Eaton technical support to diagnose “Bypass Unavailable” status of the UPS.

### ICECAPS-ACE Data Management:

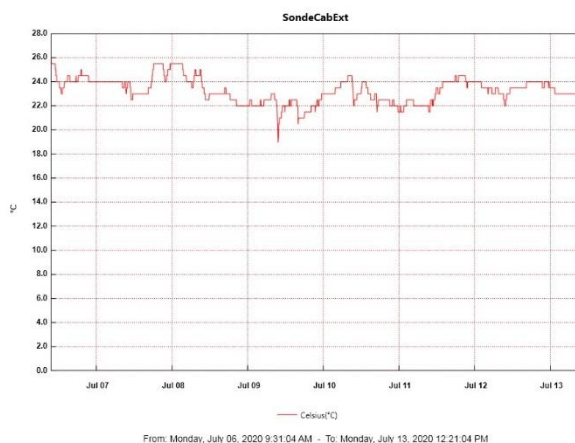
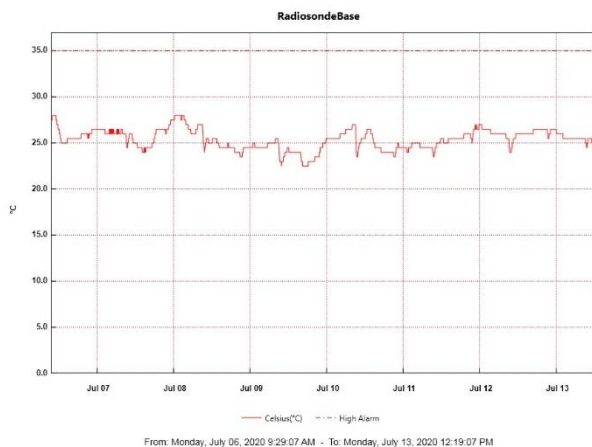
- 07-06: Data transfer completed at 0453Z.
- 07-07: Data transfer completed at 0450Z.
- 07-08: Data transfer completed at 0518Z.
- 07-09: Data transfer completed at 0448Z.
- 07-10: Data transfer completed at 0456Z.
- 07-11: Data transfer completed at 0538Z.
- 07-12: Data transfer completed at 0520Z.

### TSI:

- 2020-07-06: Software rebooted to reinitialize image processing.
- 2020-07-08: Software rebooted to reinitialize image processing.
- 2020-07-12: Software rebooted to reinitialize image processing.
- Operational.

### Radiosonde:

- See charts below for temperatures inside and outside the radiosonde cabinet over the last week.



### MWR:

- HATPRO offsite for repairs. 150-90 online and operating normally.

### SODAR:

- Operating normally.

### POSS:

- Offline. Troubleshooting with manufacturer ongoing.

### MASC:

- Operating normally.

**MMCR:**

- 2020-07-08: TWTA desiccant cartridge replaced.
- 2020-07-08: Received LabView Error 7 “file not found”.
- 2020-07-10: Received LabView Error 7 “file not found”.
- Operating normally. Monitoring transmitter power fluctuations.

**CAPABL:**

- Operating normally.

**MPL:**

- Operating normally. Monitoring laser energy fluctuations.

**CEILOMETER:**

- Operating normally.

**PAERI:**

- Operating normally.

**IceCAM:**

- Operating normally.

**IcePIC:**

- No IcePICs taken this week.

**CLASP:**

- Offline. Staged for retro.

**CPC:**

- Offline. Staged for retro.

**MSF - OPC:**

- Operating normally.

**TAWO - OPC:**

- Operating normally.

**SKYOPC:**

- Operating normally.

**INP Freezing Assay:**

- 2020-07-08: Weekly experiments completed. Assay data and internal instrument data were sent to PI.

**Fluxtower instrument suite:**

- 2020-07-07 1645 – 2100Z: Raised the SnD and Metek1/HMP1/LiCOR booms to > 2m.
- Operating normally.

**Radiometers:**

- 2020-07-06: Completed weekly data download.
- Operating normally.