

ICECAPS-ACE Weekly Report

July 27 – August 02, 2020

Ian Geraghty



Parhelic circle on 2020-07-31 framed behind the recently raised albedo stand.

General Notes:

An epic hole was excavated at TAWO to raise the albedo stand. The stand was approximately 3.5m tall and required 4 people to relocate safely.

General Weather Observations:

Date	Time (Z)	Wind	Weather	Visibility	Sky	Temp (C)	Notes
07-27	12	5kts at 121	BR	4800	OVC007	-14	
07-28	12	13kts at 120	-SN	4800	SCT015 BKN160	-13	22° halo
07-29	12	13kts at 085	-SN	4800	SCT015 BKN064	-10	
07-30	12	6kts at 143	-SN	4800	SCT016 SCT060	-14	
07-31	12	11kts at 162	IC BR	3200	FEW010 SCT064	-19	
08-01	12	7kts at 142		9999	FEW032	-20	
08-02	12	18kts at 072	BR -SN DRSN	4800	SCT015 SCT050 BKN115	-15	

Significant Weather Observations:

- 2020-07-31 1200 – 1530Z: 22° halo with parhelia and parhelic circle.

MSF

- None.

ICECAPS-ACE Data Management:

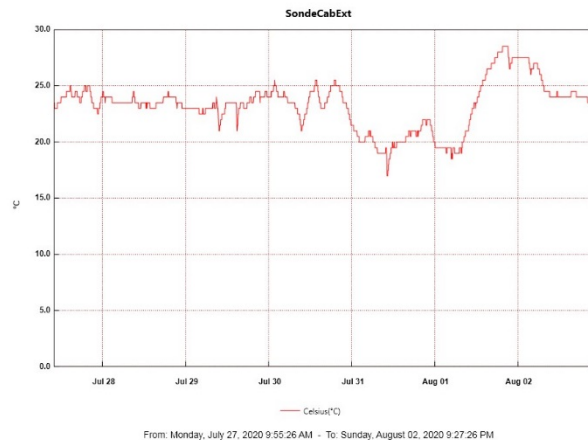
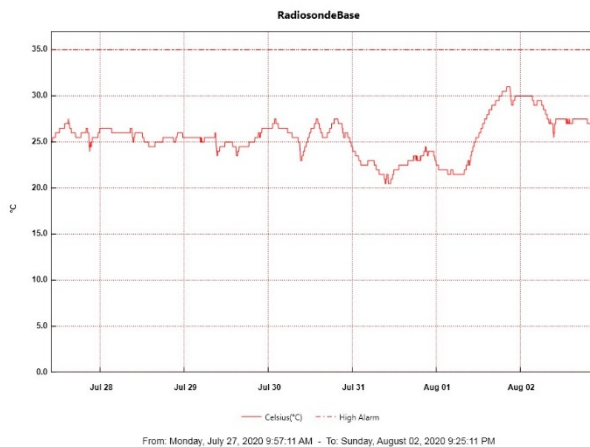
- 07-27: Data transfer completed at 0501Z.
- 07-28: Data transfer completed at 0450Z.
- 07-29: Data transfer completed at 0451Z.
- 07-30: Data transfer completed at 0502Z.
- 07-31: Data transfer completed at 0455Z.
- 08-01: Data transfer completed at 0446Z.
- 08-02: Data transfer completed at 0454Z.

TSI:

- Operating normally. No software reboots required.

Radiosonde:

- 2020-07-29 1200Z: Radiosonde signal lost for ~30s.
- See charts below for temperatures inside and outside the radiosonde cabinet over the last week.



MWR:

- HATPRO offsite for repairs. 150-90 online and operating normally.

SODAR:

- 2020-07-27 1414-1426Z: Cleaned and leveled the SODAR dishes.
- Operating normally.

POSS:

- Offline. Awaiting arrival of replacement Telebyte.

MASC:

- 2020-07-28 0906Z: Single camera bus reset occurred.
- Operating normally.

MMCR:

- 2020-07-31 1900Z: LabView Error 7 "file not found".
- 2020-08-01 1230Z: Daily calibration was skipped because LabView error from past day had not yet been cleared.
- Operating normally. Monitoring transmitter power fluctuations.

CAPABL:

- Operating normally.

MPL:

- Operating normally. Monitoring laser energy fluctuations.

CEILOMETER:

- Operating normally.

PAERI:

- Operating normally.

IceCAM:

- Operating normally.

IcePIC:

- No IcePICs taken this week.

CLASP:

- Offline. Staged for retro.

CPC:

- Offline. Staged for retro.

MSF - OPC:

- Operating normally.

TAWO - OPC:

- Operating normally.

SKYOPC:

- 2020-07-28 1350Z: Data collection restarted with refurbished pump.
- Operating normally.

INP Freezing Assay:

- 2020-07-22: Weekly experiments completed. Assay data and internal instrument data were sent to PI.

Fluxtower instrument suite:

- Operating normally.
- 2020-07-27: Fluxtower laptop was rebooted.
- 2020-07-28: LiCOR data missing after laptop reboot on the day prior. Communication was restored after the instrument was power cycled.

Radiometers:

- 2020-07-27: Completed weekly data download.
- 2020-07-30 1323 – 1906Z: Albedo stand raised from ~0.5m to ~2m.
- Operating normally.