

ICECAPS-ACE Weekly Report

November 23rd – November 29th, 2020

Heather Guy



Moon halo alongside the MSF, 2020-11-29.

Photo: Heather Guy

General Notes:

A quiet week in the MSF with the exception of CAPABL requiring a couple of reboots. The crew worked together on some station-wide upkeep tasks and drift maintenance after an exciting mid-week snow storm. Unfortunately, I still did not get any IcePICs due to the high winds. A team effort Thanksgiving dinner was enjoyed by the whole crew on Friday.

General Weather Observations:

Date	Time (Z)	Wind	Weather	Visibility	Sky	Temp (C)	Notes
11-23	12	10 kts at 219		3200	BKN131, BKN032	-45	
11-24	12	17 kts at 070	BR	800	BKN026	-45	DRSN pm.
11-25	12	20 kts at 165	BLSN, SN	300	VV006	-35	
11-26	12	15 kts at 159	BLSN, SN	500	VV043	-30	
11-27	12	15 kts at 315	DRSN	800	VV026	-45	
11-28	12	12 kts at 075		1600	BKN115	-50	
11-29	12	13 kts at 223	IC, BR	1600	SCT032	-50	

Significant Weather Observations:

- 2020-11-27 0000Z: Moon halo. BR & IC.
- 2020-11-29 1800Z until at least 0000Z: Moon halo and ice fog.

MSF

- Operating normally

ICECAPS-ACE Data Management:

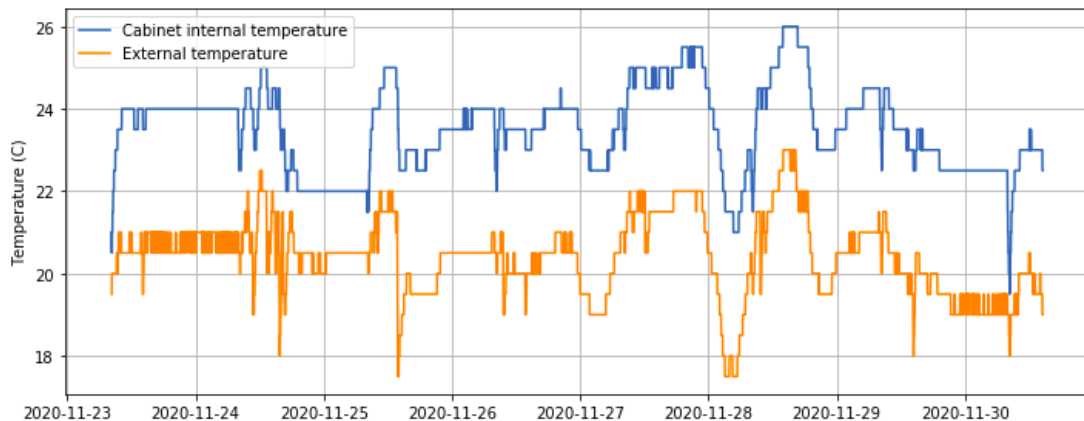
- 11-23: Data transfer completed at 0435Z.
- 11-24: Data transfer completed at 0436Z.
- 11-25: Data transfer completed at 0522Z.
- 11-26: Data transfer completed at 0436Z.
- 11-27: Data transfer completed at 0502Z.
- 11-28: Data transfer completed at 0438Z.
- 11-29: Data transfer completed at 0437Z.

TSI:

- Offline for the winter season.

Radiosonde:

- Once daily launches.
- See chart below for temperatures inside and outside the radiosonde cabinet over the last week:



MWR:

- RPG-150-90 operating normally. HATPro troubleshooting ongoing.

SODAR:

- 2020-11-23 1502-1513Z: Cleaned and leveled the SODAR dishes.
- Operating normally.

POSS:

- Operating normally.

MASC:

- Offline for winter season.

MMCR:

- Operating normally.

CAPABL:

- 2020-11-27 1217Z: Rebooted CAPABL software due to low Licel voltage. Missing data since 1732Z on the 26th.
- 2020-11-28 1422Z: Found CAPABL was not cycling through polarizations channels correctly and carried out the following troubleshooting steps:
 - Stopped program and power cycled Meadowlark controller. Upon restart 'LabView encountered an error and needed to close'.
 - Full computer power cycle including Meadowlark, Licel, PC and lasers. Received same LabView error upon restart.
 - Power cycled motors. Labview came back online but DAQ cycles were not incrementing.
 - Neely logged on and started and stopped an alignment scan. Data collection returned to normal at 1504Z.
- Operating normally.

MPL:

- Operating normally.

CEILOMETER:

- Operating normally.

PAERI:

- 2020-11-27 1315Z: Cleaned PAERI scene mirror after blowing snow event.
- 2020-11-29: Periodic short-lived 'MaxSampleStdDev' red flags due to extreme cold (-56C) temperatures. Data quality unaffected.
- Operating normally.

IceCAM:

- Operating normally.

IcePIC:

- No IcePICs this week.

CPC:

- Offsite for repairs.

MSF - OPC:

- Operating normally.

TAWO - OPC:

- Operating normally

SKYOPC:

- Operating normally.

Fluxtower instrument suite:

- Operating normally.

Radiometers:

- Solar tracker misalignment persists, otherwise operating normally.