

ICECAPS-ACE Weekly Report

December 7th – December 13th, 2020

Heather Guy



Science Technician Jasper adjusts his gear while taking a break from survey measurements during the darkest ICESat traverse of the year, 2020-12-10. *Photo: Heather Guy*

General Notes:

This week's big achievement was successfully completing our darkest ICESat traverse of the year – they can only get easier from here right? I also rebooted the MMCR and dataman computer to clear persistent error messages. There are no new instrument issues this week, I'm still waiting on further instructions for HATPro troubleshooting.

General Weather Observations:

Date	Time (Z)	Wind	Weather	Visibility	Sky	Temp (C)	Notes
12-07	12	9 kts at 178		1600	SCT091	-45	
12-08	12	14 kts at 192	FZFG	600	VV001	-49	
12-09	12	11 kts at 221	BR	800	BKN032	-48	
12-10	12	9 kts at 202		1600	BKN031	-39	
12-11	12	16 kts at 100	BR	800	SKC	-38	
12-12	12	16 kts at 151		1600	BKN042	-29	
12-13	12	13 kts at 122	BR	800	SCT	-36	

Significant Weather Observations:

- No significant weather obs this week. Lots of thin ice fog and stratus clouds.

MSF

- Operating normally

ICECAPS-ACE Data Management:

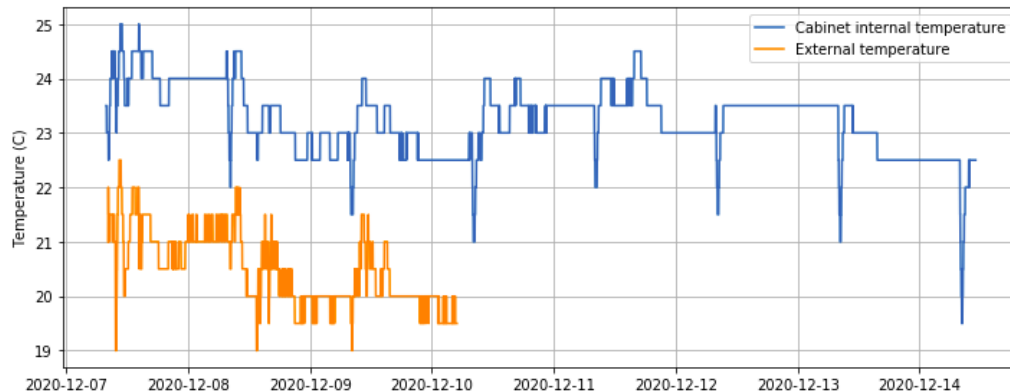
- 12-07: Data transfer completed at 0502Z.
- 12-08: Data transfer completed at 0451Z.
- 12-09: Data transfer completed at 0439Z.
- 12-10: Data transfer completed at 0439Z.
- 12-11: Data transfer completed at 0434Z.
- 12-12: Data transfer completed at 0439Z.
- 12-13: Data transfer completed at 0450Z.
- 2020-12-07 1730Z: Rebooted dataman computer to try and clear persistent error windows. The reason for the errors is that Redhat are no longer supporting dataman's operating system. Kelly Healy was able to log in and disable the repositories causing the error message.

TSI:

- Offline for the winter season.

Radiosonde:

- Once daily launches.
- See chart below for temperatures inside and outside the radiosonde cabinet over the last week (the battery ran out on the external logger on the 10th).



MWR:

- RPG-150-90 operating normally.
- HATPro troubleshooting ongoing: Awaiting further instruction from RPG on how to remove the internal computer.

SODAR:

- 2020-12-07 1334-1353Z: Cleaned and leveled the SODAR dishes.
- Operating normally.

POSS:

- 2020-12-07 1730-1839Z: POSS offline during dataman reboot.
- Operating normally.

MASC:

- Offline for winter season.

MMCR:

- 2020-12-07 1728-1751Z: Performed normal MMCR reboot to clear persistent NetCDF errors.
- Operating normally.

CAPABL:

- Operating normally.

MPL:

- Operating normally.

CEILOMETER:

- Operating normally.

PAERI:

- Operating normally.

IceCAM:

- Operating normally.

IcePIC:

- No IcePICs this week ☹️

CPC:

- Offsite for repairs.

MSF - OPC:

- 2020-12-13 1655Z: Removed from roof to defrost.

TAWO - OPC:

- Operating normally

SKYOPC:

- Operating normally.

Fluxtower instrument suite:

- Operating normally.

Radiometers:

- Solar tracker misalignment persists, otherwise operating normally.