

ICECAPS-ACE Weekly Report

January 18th – January 24th, 2021

Heather Guy



Morning radiosonde launch on 2021-01-17.

Photo: Heather Guy

General Notes:

This week I finished packing and labelling the ICECAPS southbound cargo; the INP cold stages, SKYOPC and the full ICECAPS data hard drive. I also wrote up some instructions for the installation of the CPC which will likely arrive on the final flight of turnover. A power outage at NOAA meant that no data were sent out on the 21st and 22nd, this was resolved, and the full backlog of data transferred overnight on the 23rd.

General Weather Observations:

Date	Time (Z)	Wind	Weather	Visibility	Sky	Temp (C)	Notes
01-18	12	3 kts at 308		9999	FEW065	-39	
01-19	12	10 kts at 181		9999	FEW	-52	
01-20	12	10 kts at 289	FZFG	500	BKN039	-28	
01-21	12	10 kts at 329	FZFG, -SN	800	BKN039	-31	
01-22	12	8 kts at 035	BR	800	FEW	-39	
01-23	12	4 kts at 013	BR	800	BKN020	-39	
01-24	12	15 kts at 335		9999	SCT	-36	

Significant Weather Observations:

- 2021-01-22 1245Z: Moon pillar.

MSF

- Operating normally

ICECAPS-ACE Data Management:

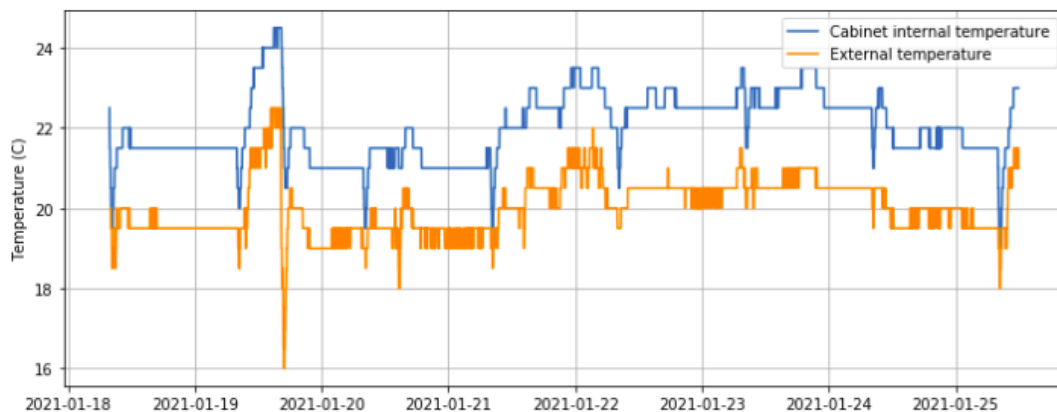
- 01-18: Data transfer completed at 0434Z.
- 01-19: Data transfer completed at 0436Z.
- 01-20: Data transfer completed at 0444Z.
- 01-21: No data transfer due to NOAA power outage.
- 01-22: No data transfer due to NOAA power outage.
- 01-23: Data transfer completed at 0932Z; all backlog transferred.
- 01-24: Data transfer completed at 0446Z.

TSI:

- Offline for the winter season.

Radiosonde:

- Once daily launches.
- See chart below for radiosonde cabinet temperatures over the last week.



MWR:

- RPG-150-90 operating normally.
- HATPro troubleshooting: Awaiting final confirmation from Erik that I can start putting the HATPro back together for storage on the winter berm (ultimately for retro in the summer).

SODAR:

- 2021-01-18 1336-1354Z: Cleaned and leveled the SODAR dishes.
- Operating normally.

POSS:

- Operating normally.

MASC:

- Offline for winter season.

MMCR:

- 2021-01-21 1508-1612Z: Rebooted MMCR after persistent 'NetCDF' errors.
- Operating normally.

CAPABL:

- 2021-01-19 1330-1338Z: Powered down CAPABL to clear snow from window.
- Operating normally.

MPL:

- No change to MPL window condition.
- Operating normally.

CEILOMETER:

- Operating normally.

PAERI:

- 2021-01-18 1307Z: Covered PAERI hatch to clear thick rime from railing. Von noticed a large data shift between before and after this cleaning which did not appear to coincide with changes in sky condition; indicating that the thick frost might have been protruding into the PAERIs field of view.
- Operating normally.

IceCAM:

- Operating normally.

IcePIC:

- 2021-01-21 1352Z: Bullets, columns and irregulars. 17 photos.

CPC:

- Offsite for repairs.

MSF - OPC:

- Operating normally.

TAWO - OPC:

- Operating normally

SKYOPC:

- Offline, due to be sent out in February for repair.

Fluxtower instrument suite:

- 2021-01-21: Downloaded enclosure temperature logger data. Temperatures ranged between -22 and 8C since 8th November.
- Operating normally.

Radiometers:

- Solar tracker misalignment persists, otherwise operating normally.