

ICECAPS-ACE Weekly Report

July 5th– July 11th, 2022

Nicolette Ratz



A view of the Big House as seen through the SoDAR 2022-07-12

Photo taken by: Nicolette Ratz

General Notes:

This week started with an early unplanned power outage (07/05) potentially powering off the MWR and SoDAR; both were restored with a power cycle once power was restored. Two more planned power outages were conducted to restore generator function later that day (07/05). The MSF building's preferred temperatures were restored through HVAC manipulation (07/05), in addition to a deep clean of the facility. The POSS is currently experiencing continued faults beginning Friday (07/08). Lastly, Leeds hazardous cargo is packaged and ready to be palletized for shipment to Kangerlussuaq during Flight Period Three.

General Weather Observations:

Date	Time (Z)	Wind (kt)	Weather	Visibility	Sky	Temp (C)	Notes
07/05	1200	10	-SN	9999	OVR030	-10	
07/06	1200	2		9999	OVR009	-8	
07/07	1200	3	FZFG	800	FEW000	-8	Horizon obscured by FZFG
07/08	1200	9		9999	FEW010 FEW060 SCT130	-11	
07/09	1200	3		9999	FEW050 FEW130	-9	
07/10	1200	4		9999	FEW180	-11	
07/11	1200	3		9999	FEW009 FEW060 SCT160	-10	

Significant Weather Observations:

- No significant weather observations made

MSF

- Unplanned power outage 2022-07-05:0311z-0345z
- Two planned power outages to restore generator function 2022-05-07 at 1304z-1306z and 1730z-1733z
- Preferred temperatures in building restored by changing SOLO regulator on HVAC system to 58 degrees 2022-07-05

ICECAPS-ACE Data Management:

- Data transfer incomplete due to unplanned power outage 2022-07-05
- Data transfer complete 2022-07-06:0516z
- Data transfer complete 2022-07-07:0541z
- Data transfer complete 2022-07-08:0421z
- Data transfer complete 2022-07-09:0506z
- Data transfer complete 2022-07-10:0547z
- Data transfer complete 2022-07-11:0636z
- Operating normally

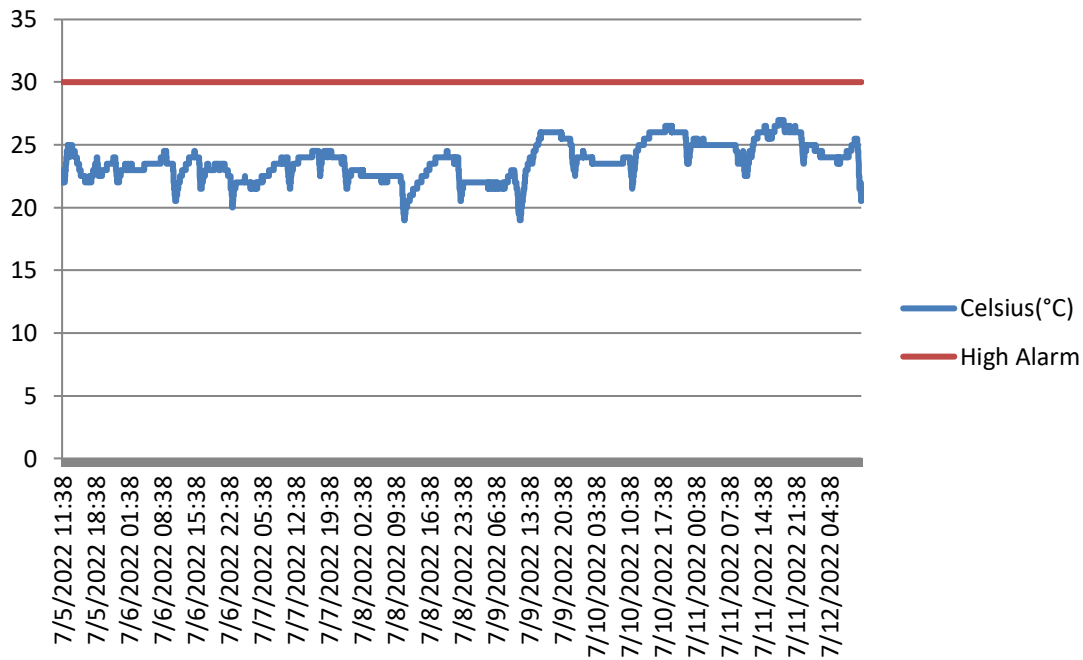
TSI:

- Operating normally

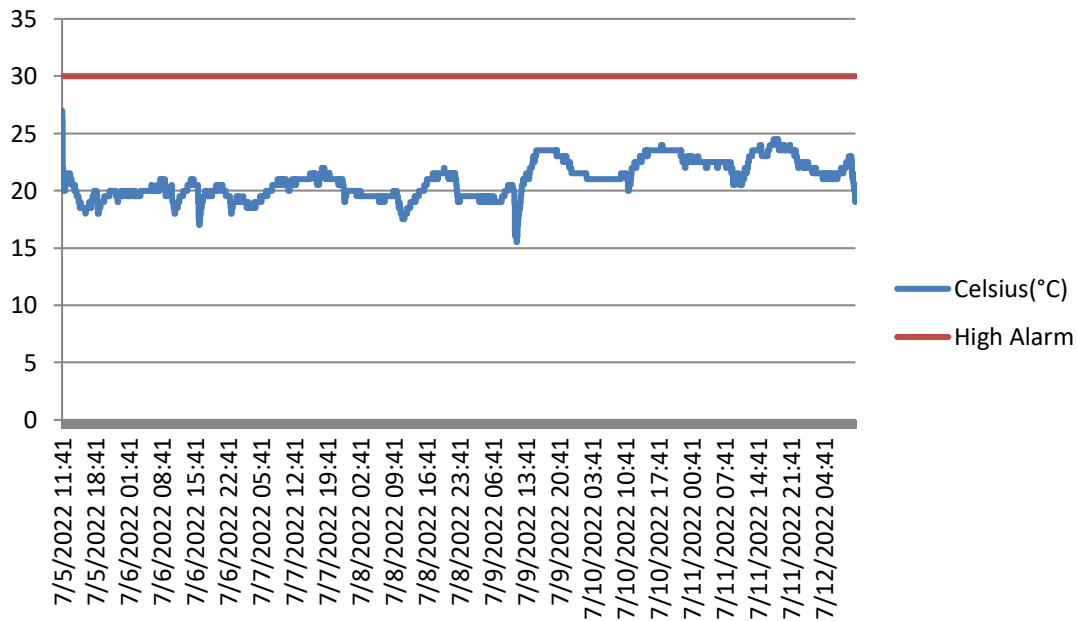
Radiosonde:

- Consistent discrepancies in RH between NOAA data and radiosonde calibration; investigation of potential causes ongoing
- Operating normally

Radiozone Cabinet Inside Temp.



Radiozone Cabinet Outside Temp.



MWR:

- Erik was kicked out of Log Me In 2022-07-08; an unsuccessful attempt to restore remote connection was conducted 2022-07-11
- Powered down during unplanned power outage 2022-07-05:0311z; restored through power cycle 2022-07-05: 0419z
- Operating normally

SODAR:

- Operating normally

POSS:

- Instrument began exhibiting continuous fault 'no good packets' 2022-07-08 to present
- Rebooted 2022-07-10:1017z-1418z; reboot did not remedy fault
- Technician and PI continuing to troubleshoot instrument

MASC:

- Currently not connected to data management network; what needs to be done to get the MASC data script connected to 'To Bolder' transfers? A large back-up of data (>1G) is currently stored on the MASC computer and will need to be considered when transferring
- Operating normally

MMCR:

- Operating normally

MPL:

- Operating normally

CEILOMETER:

- Operating normally

PAERI:

- Expected to return in August

IceCAM:

- Operating normally.

IcePIC:

- How are Ice PIC images transferred from MSF laptop to data management computer 'through network' as suggested in the ICECAPS protocol?
- No images captured this week

MAGIC CPC:

- Operating normally

MSF - OPC:

- Offline
- Expected installation in August

AWO - OPC:

- Offline
- Expected installation in August

SKYOPC:

- Offline
- Expected installation in August (AWO)

Flux Tower instrument suite:

- Tower instruments did not log data after data download 2022-06-23 and 2022-06-28; function to flux laptop was restored after reboot 2022-07-04:1120z-1132z; Technician is in communication with Heather Guy regarding this issue
- KT15 awaiting Heather's arrival; not currently responding post rebuilt cable
- V2 junction box continuity testing conducted 2022-06-17:1300z—found broken solder connection; plans to replace V2 junction box with V1 junction box if cable length allows
- HMP4 Aspirated shield found defective by Heather Guy 2022-06-09; plans to replace with HMP1 Aspirated shield

Radiometers:

- Albedo Stand operating normally
- Solar Tracker replacement expected in August