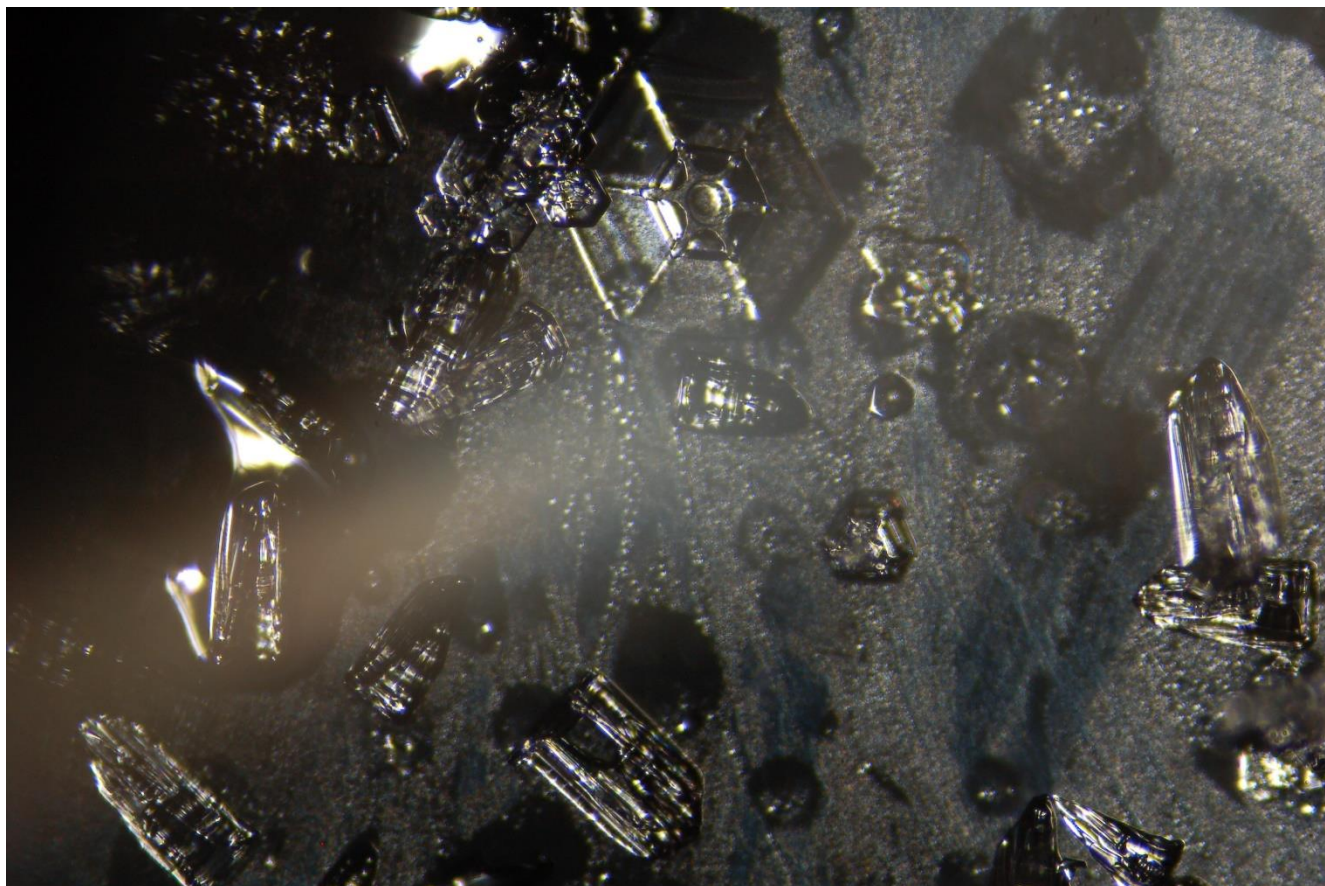


ICECAPS-ACE Weekly Report

August 2nd – August 8th, 2022

Nicolette Ratz



Ice PIC image captured during snowfall 2022-07-22

Photo taken by: Nicolette Ratz

General Notes:

This week, Summit Station continued to experience a prolonged network outage, ending Monday (08/02). During that time communication was primarily through the ARO Site Supervisor email account and Iridium Satellite phones. As of Monday, normal communication has been restored. A continuity of the POSS data cable (08/04) showed the cable to be functioning properly; after reconnecting the data cable and a full reboot of the instrument, the POSS is now collecting data again (08/07). The TSI Manager is still failing to process images (08/08). Flux Tower data was manually transferred due to the prolonged outage (08/04).

General Weather Observations:

General Weather data unavailable due to prolonged network outage 20220725 through 20220809

Date	Time (Z)	Wind (kt)	Weather	Visibility	Sky	Temp (C)	Notes

Significant Weather Observations:

- 22-degree Halo 2022-08-08:1342z
- Partial 22-degree Halo 2022-08-08:1129z
- Partial Fog Bow W of station 2022-08-05:1030z
- 46-degree Halo 2022-08-04:2320z
- Full Fog Bow 20220802:2300z-2350z

MSF

- Preparing workspace for incoming PIs
- Operating normally

ICECAPS-ACE Data Management:

- Radiosonde and MASC mounts were not present 20220802; MASC remounted when network was restored 20220808; radiosonde mount is still not present
- Flux tower data still not present in data transfers 20220808
- As of this report, “To Boulder” folder still transferring data from 20220803—manually start script in the evening?
- Data transfer did not complete 2022-08-02
- Data transfer did not complete 2022-08-03
- Data transfer did not complete 2022-08-04
- Data transfer did not complete 2022-08-05
- Data transfer did not complete 2022-08-06
- Data transfer did not complete 2022-08-07
- Data transfer did not complete 2022-08-08
- Operating normally

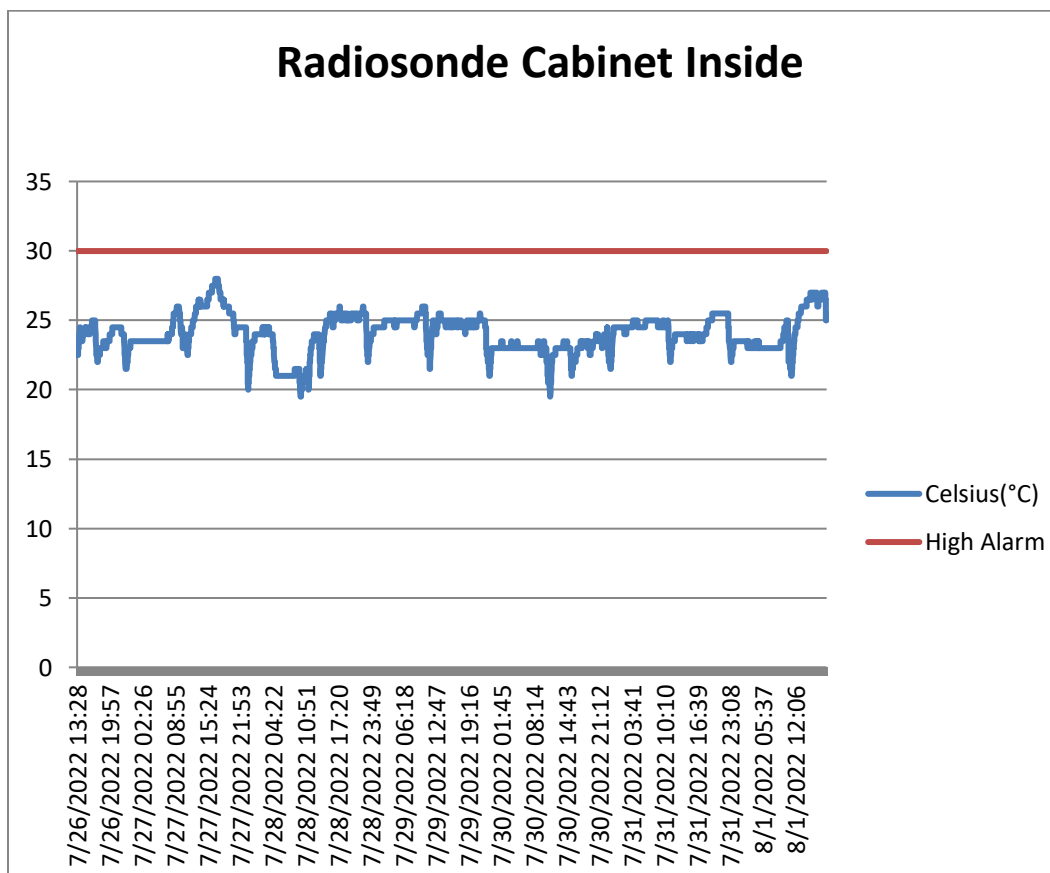
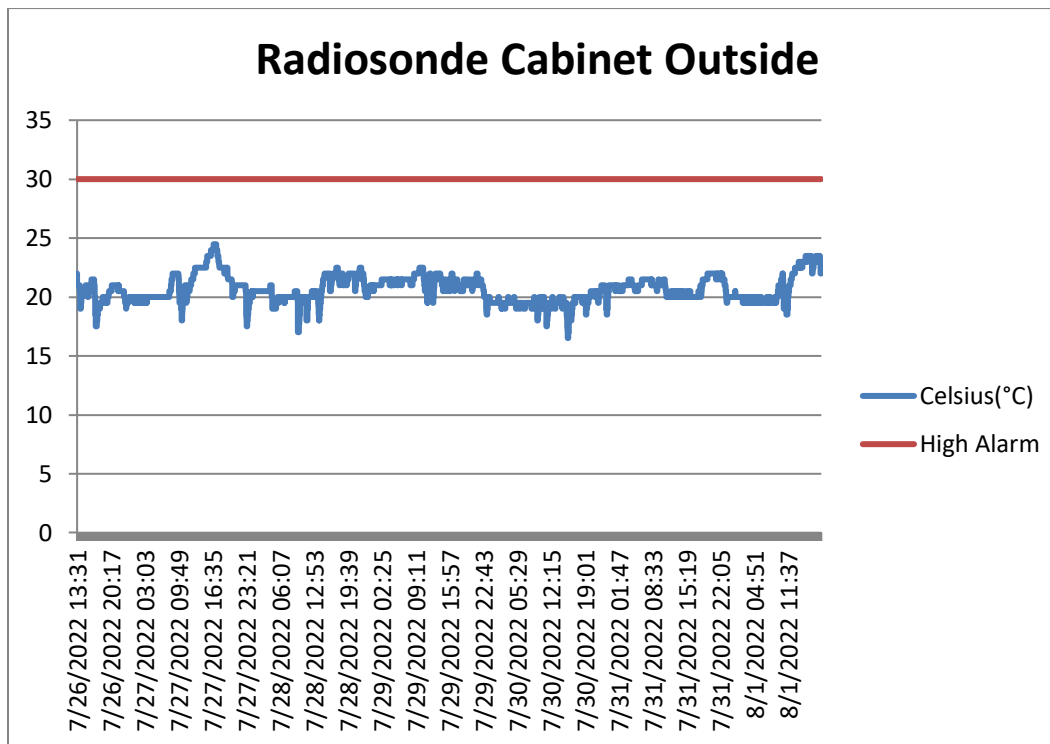
TSI:

- TSI Manager continuing to fail processing images 20220808
- Checked disk space, memory, CPU, and other Ceilometer computer processes 20220805; report did not indicate reason for TSI Manager malfunction

Radiosonde:

- Computer failed to connect to network after prolonged outage 20220808
- Davis weather data used for Radiosonde Log 20220802 through 20220808

- Operating normally



MWR:

- Operating normally

SODAR:

- Amplifier turned off for cleaning 2022-08-08:1839z-1850z
- Operating normally

POSS:

- Instrument collecting usable data 20220808—commonality between this successful reboot and one previous reboot, is the resealing of the data cable at POSS—potentially ill-fit connection?
- Reconnection data cable and reboot of instrument conducted 22020808:1849z
- Continuity testing of data cable conducted 20220804; found nothing malfunctioning with data cable

MASC:

- Computer rebooted to remedy computer mousepad malfunction 20220804:1152z
- Operating normally

MMCR:

- Error in reading MMCRSpecMom files (present in ICECAPS Log on Data Management computer during prolonged network outage) no longer present 20220808
- MMCR-RADAR and MMCR-DM computers rebooted to remedy error in reading MMCRSpecMom files 20220804; did not change status of errors
- Operating normally

MPL:

- Operating normally

CEILOMETER:

- Operating normally

PAERI:

- Expected to return in August

IceCAM:

- Operating normally.

IcePIC:

- No images taken

MAGIC CPC:

- Operating normally

MSF - OPC:

- Offline
- Expected installation in August

AWO - OPC:

- Offline
- Expected installation in August

SKYOPC:

- Offline
- Expected installation in August (AWO)

Flux Tower instrument suite:

- Manual transfer of data (due to prolonged network outage) 20220804:1204z
- KT15 awaiting Heather's arrival; not currently responding post rebuilt cable
- V2 junction box continuity testing conducted 2022-06-17:1300z—found broken solder connection; plans to replace V2 junction box with V1 junction box if cable length allows
- HMP4 Aspirated shield found defective by Heather Guy 2022-06-09; plans to replace with HMP1 Aspirated shield

Radiometers:

- Albedo Stand operating normally
 - Orange light present with memory card insertion 20220802
- Solar Tracker replacement expected in August