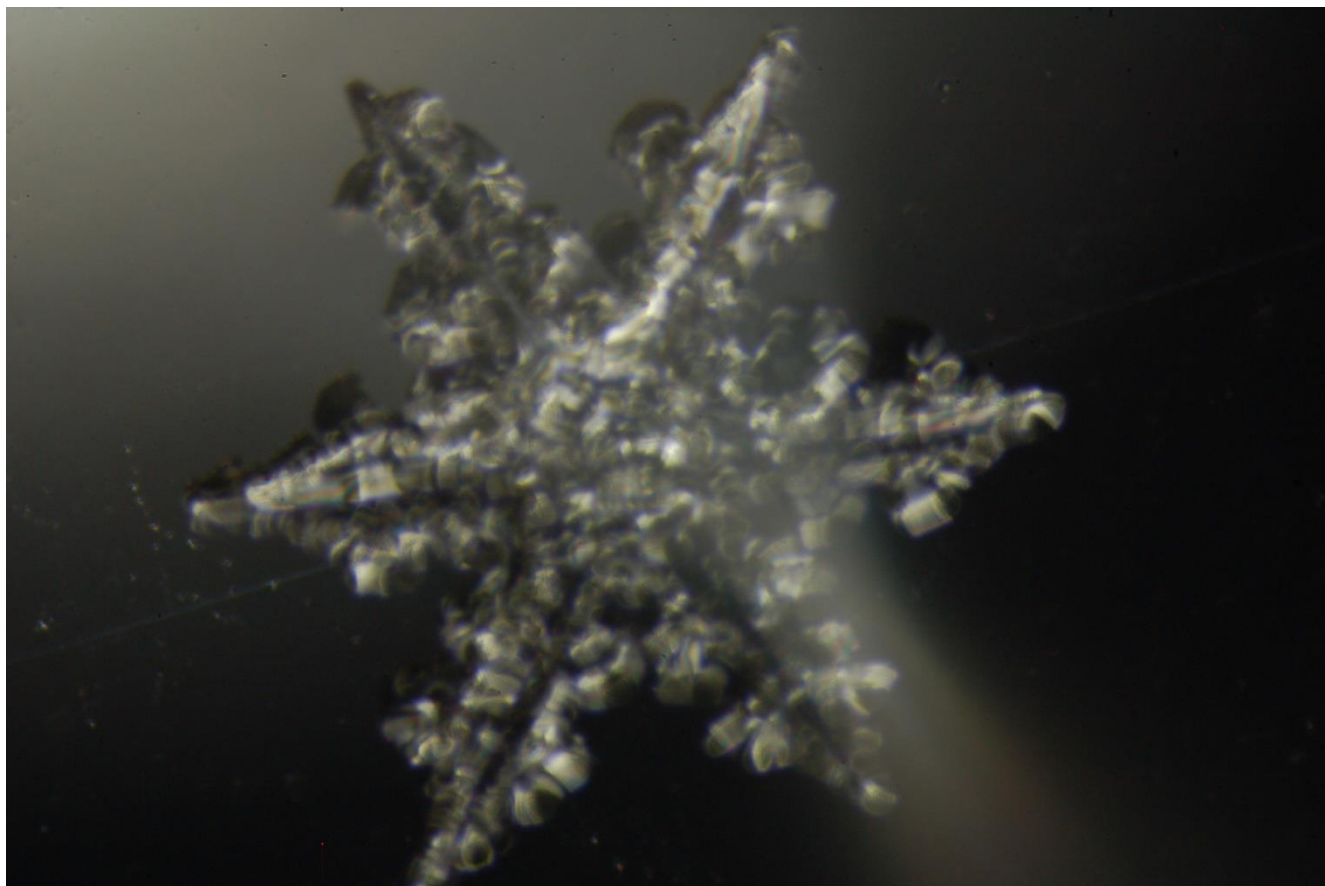


ICECAPS-ACE Weekly Report

August 23rd – August 29th, 2022

Molly Peek



ICEPic image captured 2022-08-24

Photo taken by: Molly Peek

General Notes:

This week, priority was placed on monitoring new instruments and catching up on small projects as we close out the summer season. The new Humidity and Temperature Profiler (HAT-PRO) Microwave Radiometer (MWR), Optical Particle Counter (OPC), and Biral Present Weather Sensor have now been operational for a week and are running smoothly. With new IT updates, data transfer is now smoother and previous backlogs on the Total Sky Imager (TSI) and the Dataman data transfer system have been successfully processed. With more snow coming to Summit, the Ice Particle Image Camera (ICEPic) project was more active, capturing images of snow particles from 3 different events. Image capture from the TSI was temporarily down between 2022-08-23 to 2022-08-24 but is now fully operational. We are continuing to prepare the MSF for winter as the entire camp starts to consolidate and say goodbye to the summer season.

General Weather Observations:

Date	Time (Z)	Wind (kt)	Weather	Visibility	Sky	Temp (C)	Notes
2022-08-23	12:00	16	DRSN; - SN	750	OVC	-10	
2022-08-24	12:00	15	BLSN; - SN	9999	OVC	-10	
2022-08-25	12:00	11		9999	SCT	-16	
2022-08-26	12:00	5		9999	BKN	-16	
2022-08-27	12:00	13	FRZ FOG; BLSN	1500	OVC	-14	
2022-08-28	12:00	10	FRZ FOG	1200	SCT	-17	
2022-08-29	12:00	20	BLSN; DRSN; - SN	750	OVC	-11	

Significant Weather Observations:

- Diamond dust 2022-08-27:1200z
- Partial 22-degree halo; diamond dust 2022-08-27:1930z
- Partial 22-degree halo 2022-08-28:1130z-1200z
- Full 22-degree halo 2022-08-28:1415z

MSF

- Operating normally

ICECAPS-ACE Data Management:

- Data transfer did not complete 20220823
- Data transfer completed 2022-08-24:0735z
- Data transfer completed 2022-08-25:0459z
- Data transfer completed 2022-08-26:0352z
- Data transfer completed 2022-08-27:0407z
- Data transfer completed 2022-08-28:0447z
- Data transfer completed 2022-08-29:0401z
- Operating normally

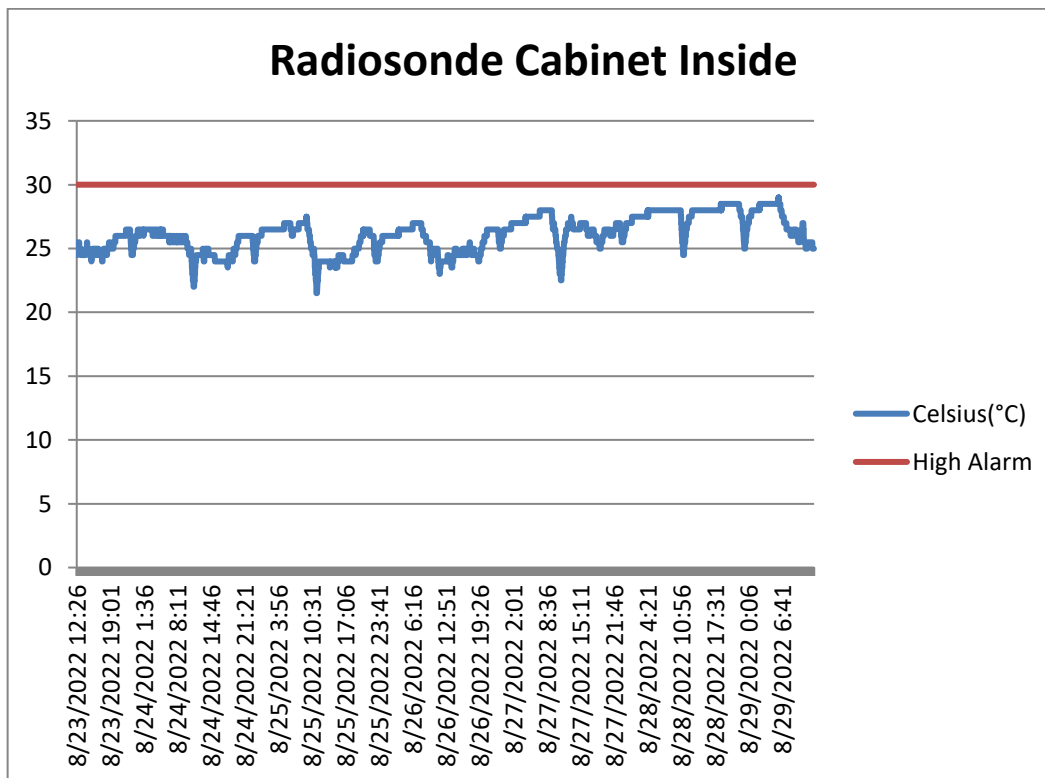
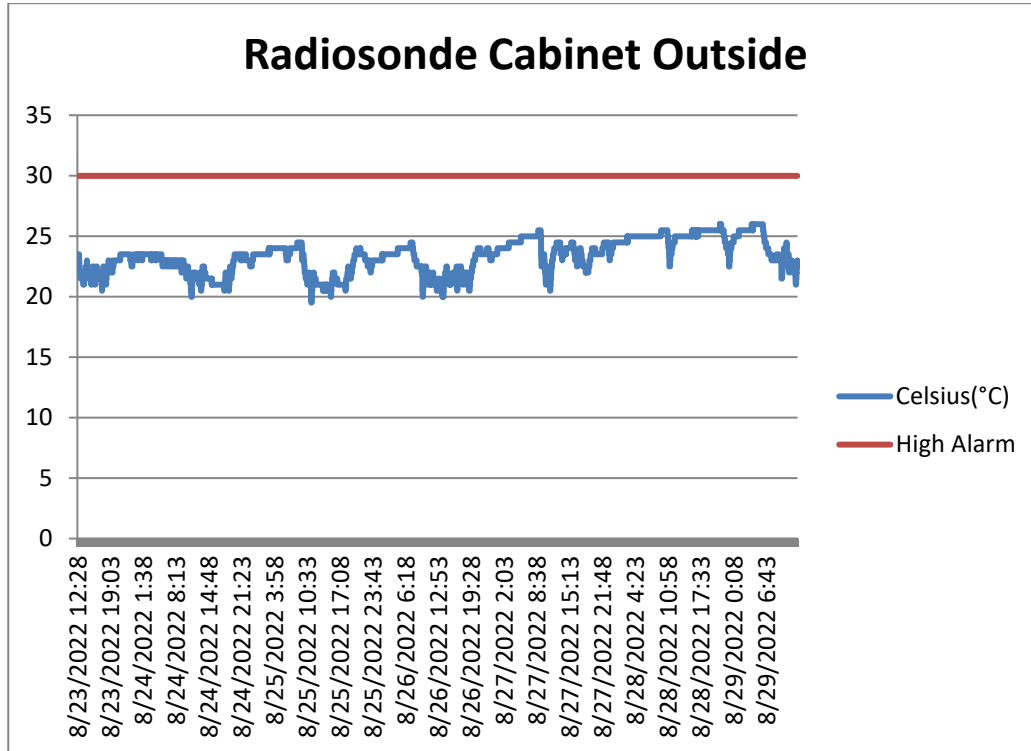
TSI:

- TSI Manager did not collect data on 2022-08-23, was successfully restarted on 2022-08-24
- Operating normally

Radiosonde:

- Failed sonde the morning of 2022-08-29 due to a lost connection to the SPS.

- Several Java script errors continue to pop up, does not appear to affect launch or data collection.
- Operating normally



MWR:

- Older MWR is not directing data to the correct place
- Operating normally

SODAR:

- Amplifier turned off for cleaning 2022-08-29:1055-1105z
- Operating normally

POSS:

- Regular transient noise errors
- Operating normally

MASC:

- Operating normally

MMCR:

- Operating normally

MPL:

- Operating normally

CEILOMETER:

- Operating normally

PAERI:

- Expected to return in August

IceCAM:

- Operating normally.

IcePIC:

- Images taken 2022-08-23
- Images taken 2022-08-24
- Images taken 2022-08-29
- Image transfer is delayed due to a network error at Summit- will be manually transferred this week

MAGIC CPC:

- Operating normally

MSF - OPC:

- Operating normally

AWO - OPC:

- Offline

- Expected installation in August

SKYOPC:

- Offline
- Expected installation in August (AWO)

Biral PWS :

- Bad self-check 2022-08-26 :2200z – 2022-08-27 :0200z
- Bad self-check 2022-08-29:0045-0115z and 0130-0200z
- Operating normally

Flux Tower instrument suite:

- One wind sensor repaired and replaced on the tower
- Second wind sensor requires more work/replacement next season
- Operating normally

Radiometers:

- Operating normally