

Troubleshooting the INTRA at Summit

After reading the mails and their attachment, there are some puzzling questions left – or in short: We still do not yet understand what exactly the problem of the Summit-INTRA is. According to the log-file Tracker_log_10_31_16.docx, it worked normal until 21.09.2016. Then it produced “near zero timed out errors” until 25.10.2016. On this day, the rewind operation was executed correctly and this continued until 30.10.2016 when a “zero-0 timed out” message came up. But it recovered and completed the “search flag run” less than 2 minutes later. However, with a unsettling value of 9380 for the parameter eposo. Now let’s first discuss what these messages tell us and then which questions the current set of data leaves open. But firstly a few words about basics of the tracker:

The tracker has an encoder disc on each axis. These two disks are firmly attached to the resp. axis – no gears in between. The encoder disc produces 9380 counts per full revolution of the axis. So far, it’s an incremental sensor only, but the encoder disk has an additional track with one mark only – the so called zero mark – and with this, the system works as an absolute position encoder.

INTRAs firmware also uses the hall counts produced by the motors to deduce an alternative, less accurate (gears!) position indicator. This allows it to detect possible failures of an encoder circuit and stop the tracker. Otherwise, the thing could go wild....

During a day of 24 hours, the primary (vertical) axis (PA) of the tracker rotates from -180° to app. $+180^\circ$. The secondary axis (SA) follows the elevation of the sun, until it goes 3 degrees below the horizon. Then it stops at this angle. At local midnight – currently at Summit near 02:30 UT – the tracker initiates a rewind. During this rewind, it also attempts to check the position of the zero mark. It firstly moves either axis to a position app. 5° clockwise (+) of its zero mark. The tracker schedules an interval of time during which this position should be reached. If this interval elapses while the position is still not reached, it produces a “near zero timed out” error. This is what we have in the log files as of 21.09.2016 until 25.10.2016 when it resumed normal operation.

Q1:

Do you have observations of the tracker during its down time 21.09. to 24.10.? What did you observe? Please describe (e. g. approximate position of PA and SA, moving or totally blocked?)

On 21.09, after a routine cleaning of the solar alignment opening, the tracker attempted to point the arm straight up. This movement was outside of its normal movement range, and it caused one of the mounted instruments (the PFR) to strike the radiometer mounting plate. This mechanical interference forced the motion of the tracker to stop, with the azimuth near south or south-east, and the elevation near zenith. The PFR was removed. The tracker remained motionless in this position until 24.10.

rw: Running in an obstacle usually damages the belt of the gear-assembly of the corresponding axis. In most cases it overstretches the toothed belt, causing it to slip in later movements. This slipping may stop the tracker but not in all cases. But the big question is: Why did the tracker move up to app. 90° of elevation? The settings in the eeprom should prevent it from moving above 75° - except of course, if it had completely lost its position and the firmware used an erroneous position below this limit. The following questions might help to shed some light on this issues.

Q6:

Did you connect to the tracker with IntraCfg prior (or later) for the removal of the PFR? Any commands sent? Position observed? Did values reported for the position correspond to the real position of the tracker? Power on during removal? Did the tracker then move – after or during removal? Did you leave it with or without power after removal?

SWD #2: To my knowledge, no successful connection was made with IntraCfg between the time of the maintenance visit this summer until 25.10. I wanted to provide further description of the time of the impact on 21.9, this according to former tech Elissa:

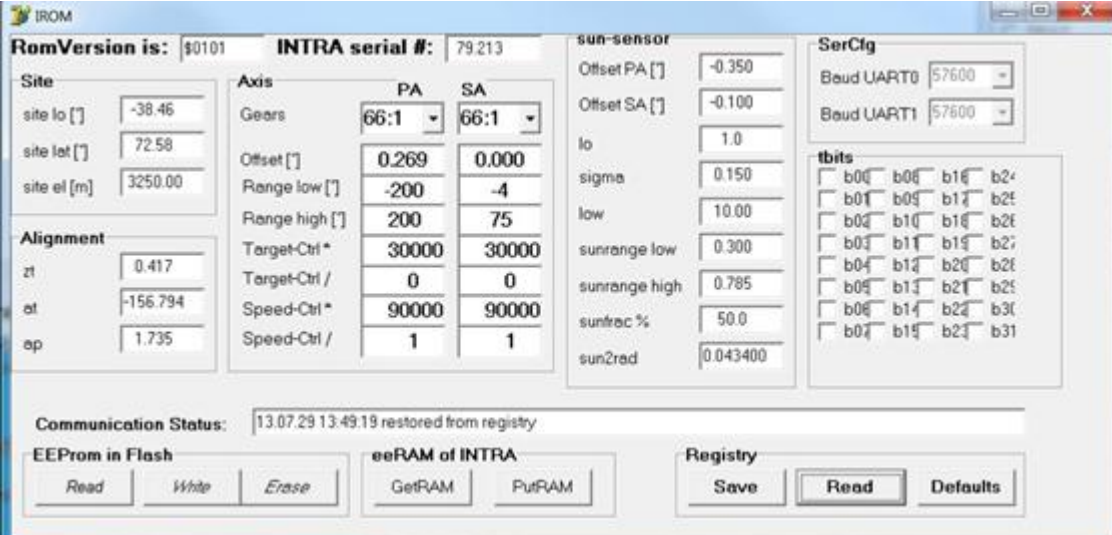
“This morning when I went out to check on the PFR there was quite a bit of frost on the solar tracker window, which seemed to be preventing it from precisely locating the sun. It was pointed in the right general direction, but jerking back and fourth a couple centimeters trying to hone in. I cleaned the frost off, and it immediately rotated into an upright position, not pointed toward the sun at all. Elissa, 21.9”

We first learned of the location of the connector for INTRA communication on 24.10. As a result, no successful connection was made to INTRA before this time, no commands were sent to INTRA, and no position info was received. Throughout this time, the tracker continued to rotate in azimuth, but with the arm elevation nearly straight up. The tracker power was left on through the removal of the PFR, and remained on afterwards. I do not know if the tracker then moved after the removal of the PFR—I can contact the techs working during that time and ask for this information.

Q2:

When it resumed normal operation on 25.10, was there an intervention? Which kind of intervention?

On 25.10, there was an intervention. On Dany’s request, we connected a laptop to the DB9 port in the lower power supply box of the tracker. Using IntraCfg, we re-sent the EEPROM flash settings specified by Dany, used the ‘Run Motors’ mode to confirm that the unit could move in both axes, and selected the ‘Sun’ mode. The tracker appeared to resume operation, pointing at a location near the point where the sun had set (near the horizon and to the south). When we checked the tracker the next morning (12z), the tracker arm pointed about 165 degrees behind the sun in azimuth, and at roughly the correct elevation. The EEPROM settings sent on 25.10 were as follows:



IRROM

RomVersion is: \$0101 INTRA serial #: 79.213

Site

site lo [°]	-38.46
site lat [°]	72.58
site el [m]	3250.00

Axis

	PA	SA
Gears	66:1	66:1
Offset [°]	0.269	0.000
Range low [°]	-200	-4
Range high [°]	200	75
Target-Ctrl*	30000	30000
Target-Ctrl /	0	0
Speed-Ctrl*	90000	90000
Speed-Ctrl /	1	1

sun-sensor

Offset PA [°]	-0.350
Offset SA [°]	-0.100
I0	1.0
sigma	0.150
low	10.00
sunrange low	0.300
sunrange high	0.785
sunfrac %	50.0
sun2red	0.043400

SerCfg

Baud UART0	57600
Baud UART1	57600

tbits

<input type="checkbox"/> b00	<input type="checkbox"/> b06	<input type="checkbox"/> b16	<input type="checkbox"/> b24
<input type="checkbox"/> b01	<input type="checkbox"/> b05	<input type="checkbox"/> b17	<input type="checkbox"/> b25
<input type="checkbox"/> b02	<input type="checkbox"/> b10	<input type="checkbox"/> b18	<input type="checkbox"/> b26
<input type="checkbox"/> b03	<input type="checkbox"/> b11	<input type="checkbox"/> b19	<input type="checkbox"/> b27
<input type="checkbox"/> b04	<input type="checkbox"/> b12	<input type="checkbox"/> b20	<input type="checkbox"/> b28
<input type="checkbox"/> b05	<input type="checkbox"/> b13	<input type="checkbox"/> b21	<input type="checkbox"/> b29
<input type="checkbox"/> b06	<input type="checkbox"/> b14	<input type="checkbox"/> b22	<input type="checkbox"/> b30
<input type="checkbox"/> b07	<input type="checkbox"/> b15	<input type="checkbox"/> b23	<input type="checkbox"/> b31

Alignment

zt	0.417
at	-156.794
op	1.735

Communication Status: 13.07.29 13:49:19 restored from registry

EEProm in Flash **eeRAM of INTRA** **Registry**

Read Write Erase GetRAM PutRAM Save Read Defaults

rbw: The above values in the eeprom are those for the controller board that was used until June 2016. This can be seen from the serial number. When I installed the new board (#252) in June, I edited the serial number accordingly and also changed the I0-value from 1.0 to 5.0. The low value for I0 may cause problems during low elevation or partially clouded conditions, because low level signals on the sensor that should be discarded are considered valid and lead to wrong movements.

When the tracker reaches the 5° positions, its submode is changed to WAITZERO and a “search zero run” is triggered. As previously, an interval is scheduled during which these flags should be detected. If this does not happen in due time, an “zero-0 or zero-1 timed out” error is reported. Zero-0 for the PA and zero-1 for the SA. This message popped up on 30.10. But less than 2 minutes later, the PA found its zero mark. And it issued the message:

```
16-10-30 02:36:07 chat,zero-0 found, eposo,9380, eerrs,0,
```

hposo,59605, herrs,0

eposo = 9380 is the value of the position of the PA at the moment of detection of the zero mark. The strange thing is that 9380 counts correspond to exactly 360° , hence one full turn. The value of hposo=59605 corroborates this, because this as well corresponds app. to one full turn. This means, that the tracker was far above $PA=360^\circ$ when it started its zero search (which moves ccw). Note that positions above 200° are “illegal”, because the settings in the eeprom limit the movement of the PA to the range (-200,+200). It looks as if the values in the eeprom were garbage to allow this to happen.

Q3:

What values did you find in the eeprom when you connected to the tracker on 31.10.?

When we connected to the tracker on 31.10, we found that the EEPROM values were unchanged since the time that we input them on 25.10. That is, they still matched Dany’s values.

Q4:

Following the fix of the eeprom values when you switched to sun mode: What was the time of the day and what did the tracker do?

The switch to Sun mode has had different effects during different attempts. In the attempt on 25.10, the sun had recently set, and the tracker moved to a position near the location of the sunset (near the horizon and to the south), but was shown to be 165 degrees behind the sun at sunrise the next morning. On later attempts, e.g., 31.10 at about 13:00z or 14:00z, the sun was visible in the sky to the south, but the tracker pointed to a location near the horizon and to the north. We had input a new set of EEPROM parameters from Dany for this attempt. These new settings are as follows:

The screenshot shows the IROM configuration software interface. It includes fields for RomVersion (0101), INTRA serial # (79.252), and Site coordinates (lat: 72.580, lon: -38.460, el: 3250.00). The Axis section shows Gears (66:1), PA (66:1), and SA (66:1) settings, along with Offset, Range low/high, and Target/Speed-Ctrl values. The sun-sensor section includes Offset PA/SA, lo, sigma, low, sunrange low/high, sunfrac %, and sun2rad. The SerCfg section shows Baud local and remote (57600) and a list of tbits (b00-b31) with checkboxes. The Status bar shows the time and date (16.06.07 12:23:49) and parameters from registry. At the bottom, there are buttons for EEPROM in Flash (Read, Write, Erase), eeRAM of INTRA (GetRAM, PutRAM), and Registry (Save, Read, Defaults).

The final attempt to switch to Sun mode is described below. I should note that the sun is low during the entire day, given our high latitude at this time of year.

Q7:

Silly question: The z following a time – does that mean “zonal time” at Summit UT – 2hours?

A word of caution: The most recent version of IntraCfg has a problem with the target and speed values in the Axis frame: The values 90000 and 30000 are shown as 9000 and 3000 because for some hitherto unknown reason, the right-most zero of these numbers is hidden. You can put the cursor into such a field and using the shift right key, you may make this last digit to become visible. We will have to check IntraCfg to fix this issue.

The attempt on 25.10. You write: ...the next morning it pointed 165 degrees behind the sun. But according to the log, the tracker performed a successful rewind and zero check during all days until and including the night from 28.10 to 29.10.

SWD #2: Apologies for the confusion about the ‘z’ notation. This refers to ‘zulu’ time, or UTC. E.g., 12:00z is equal to 12:00 UTC.

I noticed earlier that the final digit of these numbers disappears out of the text field. I have used the numbers 30000 and 90000, including the final ‘0’ digit during my configurations on 31.10.

I cannot account for the successful log reports from the tracker during this time. It did not point at the sun. Could it be that it did move successfully through a daily routine, but that the alignment was off by 165 degrees?

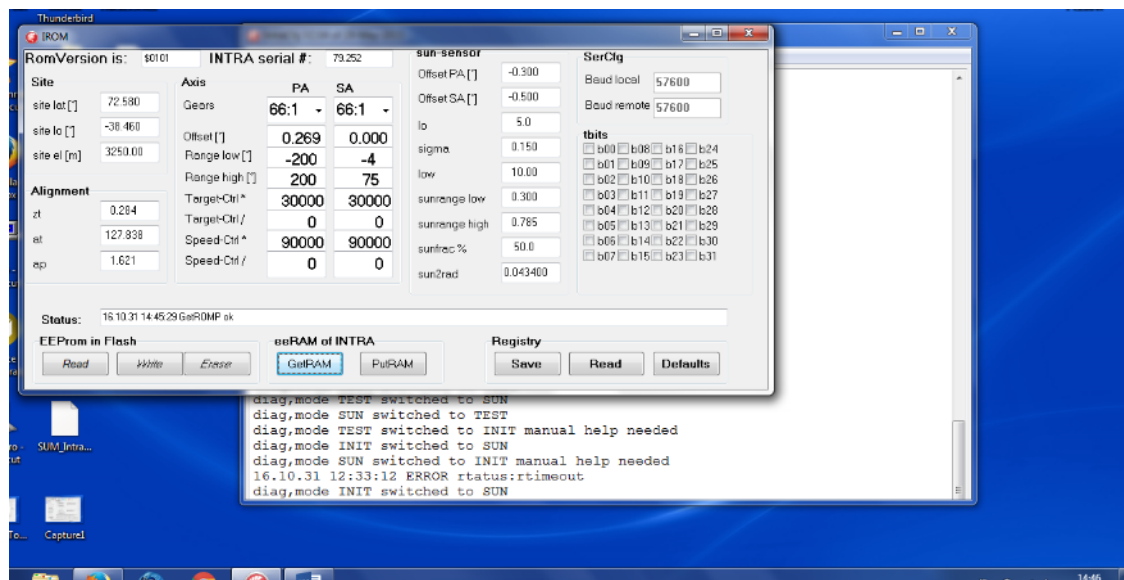
Q8:

How did the tracker recover from this “165° behind”-condition? Any interventions?

The intervention of 30.10. I understand you entered the new (shown above and hopefully with enough zeros for the 90000 and 30000 numbers) values into the eeprom, but otherwise did not send it any commands. Please check this if you connect to INTRA next time.

SWD #2: I believe that the tracker remained in this 165 degree behind mode after the intervention in which we sent the new EEPROM values.

I will confirm the number of zeroes in the 90000 and 30000 fields each time I connect to INTRA. You can see in the following screenshot that we entered the correct numbers on 31.10.



Q9:

Did you check its position (with IntraCfg) and compare it with what you see when looking at the tracker?

Hint: Checking the position means: Open window “Positions and Modes”, then click GetPos to fetch the data from INTRA and to display them.

SWD #2: I believe we did perform this test. I will check our screenshots from our evening diagnostics on 31.10 and see if I have the results.

Q5:

Is the tracker now up and running or what is its current status?

On the final time that we switched to Sun mode (31.10, 18:54z), the tracker completed a full 360 rotation in azimuth (moving ccw), and then continued to rotate. We were concerned that further rotation could damage the instrument, so we hit the 'reset' button in the 'position window' to stop motion. We used the "Run Motor" function to reverse this motion by 90 degrees, then hit 'reset' to stop. We left the instrument in this state.

Thank you for your help with the diagnosis of this issue!

Ok, this left the tracker with power on and mode "INIT". It would be helpful to have an idea about the current position of the tracker and compare it with what you see. And then you could perform a search zero and relaunch the tracker in clock mode. Sun mode currently is not advised, because of the very low elevation of the sun. So we better use clock mode for our "diagnostics" operation.

Tracker system of coordinates: When the tracker points to the crossing of the south-meridian with the horizon, this corresponds to PA=0 and SA=0 or short 0.00/0.00. The crossing of the east-meridian with the horizon then corresponds to -90.00/0.00 – and correspondingly +90.00/0.00 for the crossing of the west-meridian with the horizon.

Procedure to follow – please do the following:

- Set up a connection IntraCfg to INTRA. Check the link by clicking on Utilities>WhoAmI. You should receive a string identifying the firmware – no timeouts! Please also check the issue about the 90000 and 30000 values in the eeprom. It might be helpful to also check the time setting of the tracker. Assuming you PC runs on (accurate) UT (not zone time) click on RemotCfg>TimeDate. Clicking on Now displays the time as read from the PC, clicking on Remote displays the time as fetched from INTRA and SendNow reads the time from the PC and sends it to INTRA, thereby updating INTRA's clock settings.
- Open the "Positions and Modes" window (if not yet open)
- Click GetPos and take a shot of this window.
- Write down what you think is the app. position the tracker is actually pointing to.
- Dismount the shaver mechanism from the western flange (just to be cautious).
- Using the PA and SA settings in the "Run Motors" frame, position both axis of the tracker at slightly positive values. Do not believe the numbers you see in the position window, but check that the primary axis is slightly westward from the south point and the elevation points a few degrees up. The PA and SA fields in the "Run Motors" frame accept (speed-) numbers from -999 to +999. Then
- click Run and the tracker axis move accordingly. Click Reset to stop movements.
- Once the tracker is positioned to point to app. 5° / 5° check the settings in "FindZero" frame, both axis should be set for ccw operation.
- Click Go. Both axis start moving ccw and soon will hit their zero mark. This will stop the movement of the corr. axis, issue a message to the main window (and to the message buffer) and also clear the position of this axis. If the movement reaches a limit of -15°, the movement stops and an error message is generated. If you feel you might still be too far away from the true zero of this axis, you may e. g. set the other, possibly more successful axis to e. g. SA – and hit Go again. The PA will then move again, the SA will not move.
- Once both axis have found their zero mark, we recommend to repeat the procedure – but slightly modified as follows:
- Set the mode to REMOTE and enter 5 in both fields in the "Go to Position" frame
- Click on Set Target.
- Check by clicking on GetPos that the position has been reached.
- Set both axis for ccw zero search and click Go. Wait for the zero found messages.
- Set REMOTE again (check by clicking on GetMode), enter values -90 and 0 in the PA and SA field in the "Go to Position" frame and click SetTarget.
- Wait a few seconds, then set CLOCK-mode.

- Observe what the tracker does. Does it correspond to expectations? If so, attach the shader mechanism to its flange again.
- Check tracker the next day (visually only).

In case you run into too many problems, park the tracker by setting it into INIT-mode, leave its power on and contact us again.

Thank you.

SWD #2: Thank you for the detailed diagnostic instructions. I am looking forward to performing these tests, and returning the tracker to normal operation! Very best,

Sam

Following text copied from Sams email. Comments by **rw** interspersed in text.

I visited the tracker today at 17:20z and wanted to report the results of this diagnostic trip. I was accompanied by fellow science tech Nate Bowker. The tracker log file is attached. (relevant lines copied from there into this document)

```
16-10-29 02:34:40 chat,zero-1 found, eposo,0, eerrs,0, hposo,-1, herrs,0
16-10-30 02:34:40 chat,zero-1 found, eposo,0, eerrs,0, hposo,1, herrs,0
16-10-30 02:35:18 WARNING zero-0 timed out
16-10-30 02:36:07 chat,zero-0 found, eposo,9380, eerrs,0, hposo,59605, herrs,0
16-10-31 02:34:44 chat,zero-0 found, eposo,0, eerrs,0, hposo,-7, herrs,0
16-10-31 02:34:45 chat,zero-1 found, eposo,0, eerrs,0, hposo,0, herrs,0
16-11-04 17:28:39 chat,zero-1 found, eposo,0, eerrs,0, hposo,0, herrs,0
16-11-04 17:28:41 chat,WARNING:zero-0 not found
16-11-04 17:36:16 chat,zero-1 found, eposo,0, eerrs,0, hposo,1, herrs,0
16-11-04 17:36:18 chat,WARNING:zero-0 not found
```

--Result of WhoAmI query:

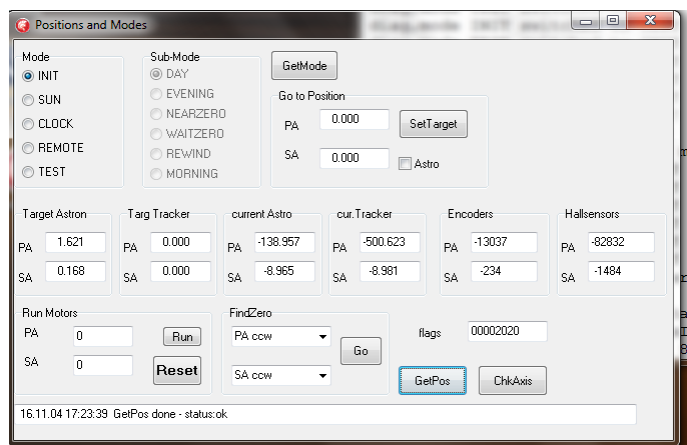
INTRA FW V2.19 - build of Jun 8 2016 13:45:40 hw:icb_25
 iROM-version: 101 string:

--Result of GetPos:

See attached screenshot "GetPos_request"

Estimated elevation: -10 degrees

Estimated azimuth: -140 degrees (140 degrees counter-clockwise from South)



cur. Tracker PA = -500.623. Now $-500 + 360 = -140$ which corresponds to the observed estimated azimuth. Hence one full turn below where it should be and way below the -200 limit imposed on this axis. Similarly, the SA is outside its range [-5..75]. It looks as if parts of the firmware of this tracker is corrupted.

--Position tracker slightly westward of South and above horizon using "Run Motors"
This was done successfully.

--Use "Find Zero - Go" to move to the zero mark

We attempted to perform this task. In the elevation axis, the unit stopped at horizontal quickly. In the azimuth, the unit continued rotating for slightly longer. We do not know if the tracker passed over the zero and did not find it, or if we started too far away from zero in the first place (outside of the range 0deg - 15deg).

--Set mode to "REMOTE" and enter 5 in both fields in the "Go to Position" frame; click on "Set Target" Upon doing this, the tracker elevation increased slightly, while the tracker rotated clockwise azimuth over about 180 degrees, pointing roughly northward, and continued moving. To prevent damage, we hit 'reset' to stop this motion.

This looks ok. The PA was at -500, your positioning to slightly south brought it up to something like -500 + 140 = -360 and its normal that it starts cw if you instruct it to move to +5.

--We then repeated the manual positioning to ~5 degrees using "Run Motors" and tried to "Find Zero" again. The text output seemed to suggest this was unsuccessful.

If you are not sure if you are sufficiently cw of the zero mark – go further cw, run “search zero” for the PA repeatedly with the search of the SA disabled (SA- instead of SA ccw or SA cw)

At this point, we were unable to continue work outside, as the cold temperatures had made our laptop screen unresponsive. We left the unit in "INIT" mode and returned inside. We would like to repeat the attempt to find an azimuth zero, as we think we understand the system and available feedback a bit better. We will return to continue diagnostics at the next available opportunity.

Preliminary conclusion

It is not clear what's going on and how and why the tracker oversteps its range. Especially why the PA is one full turn more in the negative than it should be. The SA also showed such a behavior when it pointed straight up with the instruments end of October. This also overstepped the limits set for this axis. The firmware – or a part of it – looks corrupted.

Because the firmware is stored in flash, I consider it more likely, that some data in the RAM-area are corrupted – for hitherto unknown reasons. It would be helpful to test what happens if one shuts the tracker down (power off) and relaunches it again. But there is this disturbing fact that we do not know for sure how many full turns the PA is from its original position. It would make sense to open the service cover on top of the tracker and to check the cabling prior to continue any operations. And if you find the power cable of the tracker twisted or otherwise stressed – fix it by moving the tracker accordingly using the remote command or the “Run motors” command. Now let's assume you have done this, then proceed as follows:

- Position both axis cw of the zero mark – allow sufficient margins for the PA
- Remove the power from the tracker, wait a few seconds and then apply it again. Because you have opened the service opening of the tracker, the easiest method to remove power is to unplug the power cable inside the service opening from the saver cable. The saver cable is a short cable (app. 30 cm) plugged into the power socket of the controller and providing a power socket on its other end. This because the power socket of the controller is difficult to access. Please note that this pair connector/socket has a locking mechanism which is however easy to understand.
- Check eeprom values by opening the eeprom window and clicking on GetRAM (take screenshot of window).
- Run search zero for both axis (PA ccw, SA ccw). If e. g. the SA find's its zero mark, disable it (SA-) and continue search on the PA only (still PA ccw) until you either find the zero mark or you are sure that you went over it, but the tracker did not recognize it.
- Assuming the find zero worked on both axis – set remote mode and enter values PA = -90, SA = 5, click Set Target, then wait until it reaches this position.

- Set clock-mode. Does the tracker react as expected?
- Check the next morning – visually and also by accessing INTRAs message buffer.

Thank you for the diagnostic instructions. Here are the results from this series of tests.

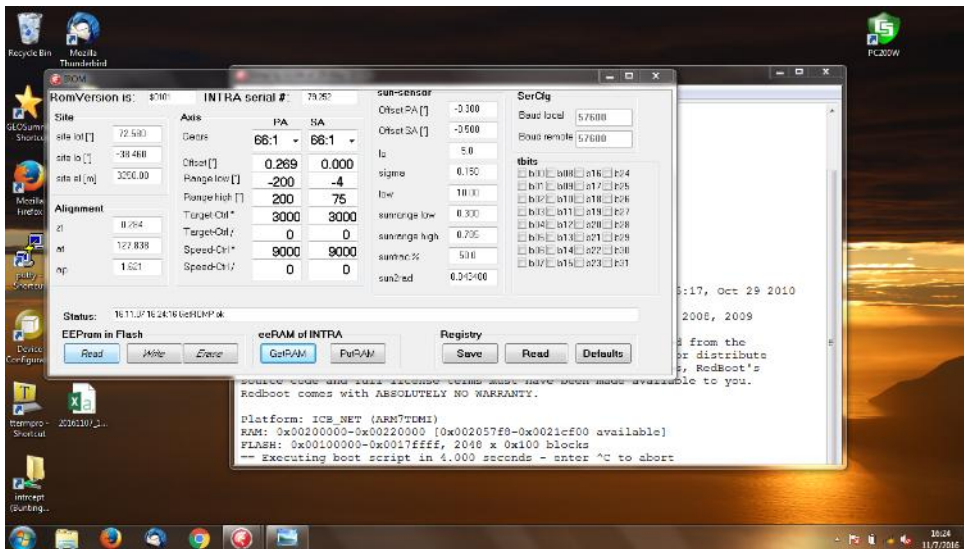
We've returned from a diagnostic trip to the tracker. We opened the service hatch of the tracker. Inside, we could see the cables disappearing towards the rotation axis of the tracker, but could not determine from this view angle if the cables were wound up. As the PA position sensor reported a -500 degree position, we rotated the tracker a full turn in the positive direction, stopping with PA at ~15 degrees and SA at ~10 degrees. **rw**: Yes, the current values of the tracker looked ok and hence rotating the PA one full positive turn makes sense. The reason why I advised to open the cover is, that we do not really know what happened during the days before. It thus was a precautionary measure.

With the tracker in this ready-to-zero position, we disconnected tracker power using the connection inside the service hatch. With the tracker power disconnected, we confirmed that the tracker was off by sending a 'GetPos' command, which returned a timeout message. We then reconnected tracker power. After about five seconds, the tracker began to move ccw in both axes (downward and towards the east). The tracker moved past the zero positions without stopping, and the vertical axis quickly encountered a mechanical stop, so we hit the 'reset' button to stop its motion. The INTRACfg console contained the following information:

```
**Warning** FLASH configuration checksum error or invalid key
Use 'fconfig -i' to [re]initialize database
RedBoot(tm) bootstrap and debug environment [ROM]
Non-certified release, version icb_ser by brusag - built 15:35:17, Oct 29 2010
Copyright (C) 2000, 2001, 2002, 2003, 2004, 2005, 2006, 2007, 2008, 2009
Free Software Foundation, Inc.
RedBoot is free software, covered by the eCos license, derived from the
GNU General Public License. You are welcome to change it and/or distribute
copies of it under certain conditions. Under the license terms, RedBoot's
source code and full license terms must have been made available to you.
Redboot comes with ABSOLUTELY NO WARRANTY.
Platform: ICB_NET (ARM7TDMI)
RAM: 0x00200000-0x00220000 [0x002057f8-0x0021cf00 available]
FLASH: 0x00100000-0x0017ffff, 2048 x 0x100 blocks
== Executing boot script in 4.000 seconds - enter ^C to abort
RedBoot> go 0x114000
INTRA FW V2.19 - build of Jun 8 2016 13:45:40 hw:icb_25
```

rw: The above is the output of the bootloader. It starts with an error message which however can be ignored. Then, after a 4s-timeout the INTRA firmware starts and writes out its start message (build version etc). That the tracker than started to move should have been avoided by setting it in INIT-mode prior to the power off/ power on sequence. Sorry I forgot about this in my instructions. The correct method to launch the tracker is: Power up – set INIT-mode if it is not yet in this mode – position tracker for a search zero on both axis using Run motors – search zero – set REMOTE-mode and Set target to -90/5 – wait for it to reach 90/5 - set CLOCK or SUN-mode – and its ready for unattended operation. You did the right thing when you stopped it (Reset forces INIT-mode).

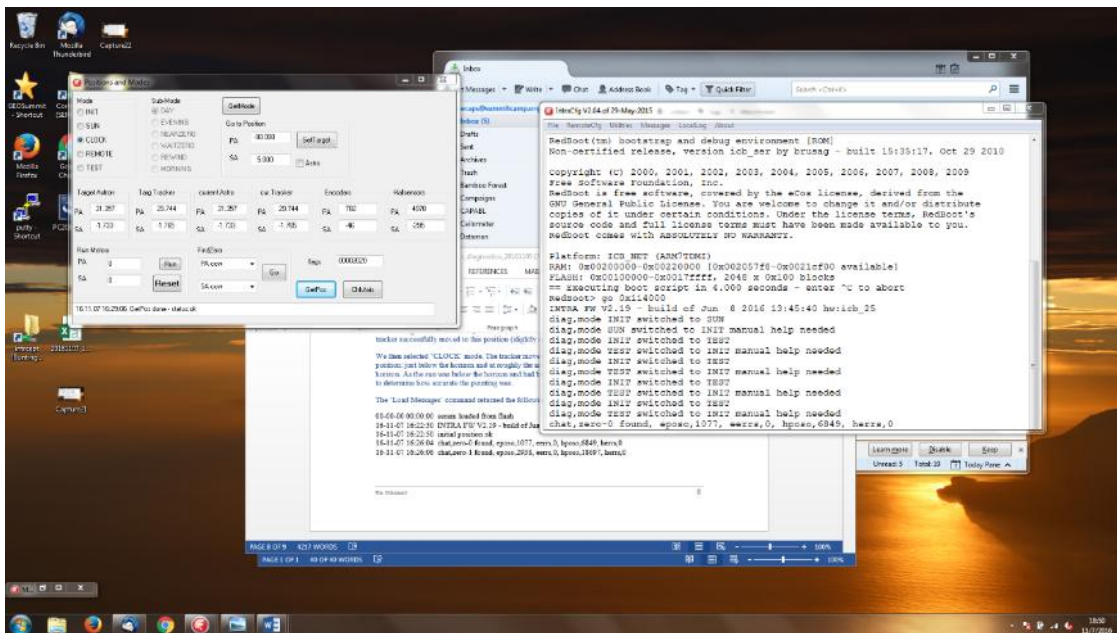
A screenshot of the EEPROM parameters is shown here:

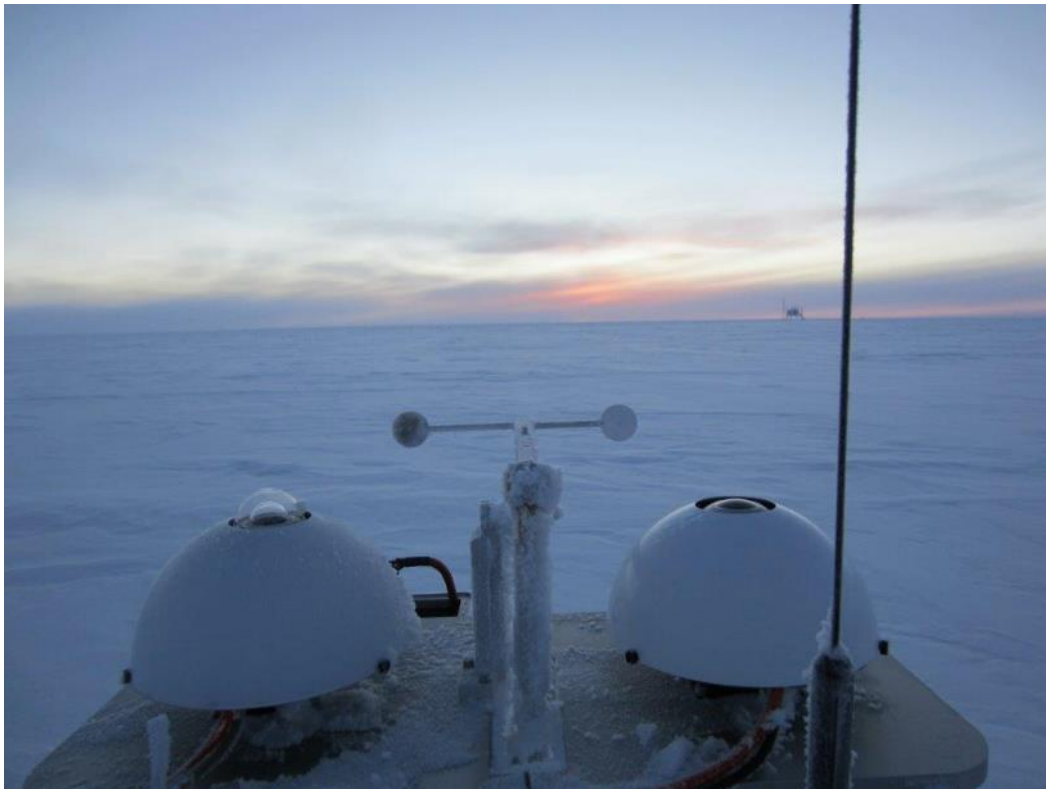


We then used 'Run Motors' to reposition the tracker in the ready-to-zero position, and hit 'Find Zero'. The tracker did successfully find zero and stopped in the zero position.

After setting 'REMOTE' mode, we then entered values PA=-90 and SA=5, then hit 'Set Target'. The tracker successfully moved to this position (slightly above the horizon and pointing east) and stopped.

We then selected 'CLOCK' mode. The tracker moved to point approximately to the sun's current position: just below the horizon and at roughly the azimuth at which the sun had passed below the horizon. As the sun was below the horizon and had been partly obscured by low clouds, it was difficult to determine how accurate the pointing was. A screenshot and photo of the resulting position is shown here:





rw: While the sun is still out you may use the Sun window to display the signals of the 4-quadrant sensor as well as the pointing-error (in degrees) as shown in the PA and SA-fields. Command is Utilities>Sun then click Update.

The 'Load Messages' command returned the following information:

```
00-00-00 00:00:00 eeram loaded from flash
16-11-07 16:22:50 INTRA FW V2.19 - build of Jun 8 2016 13:45:40 hw:icb_25
16-11-07 16:22:50 initial position ok
16-11-07 16:26:04 chat,zero-0 found, eposo,1077, eerrs,0, hposo,6849, herrs,0
16-11-07 16:26:06 chat,zero-1 found, eposo,2938, eerrs,0, hposo,18697, herrs,0
```

We will observe the tracker's position tomorrow morning, and retrieve the tracker log at the next available opportunity.

The next morning (8 Nov 2016), the tracker position was checked twice, at 12:14z and at 14:20z. During both visits, the tracker did point near the sun's location, although the presence of low clouds and the large solar zenith angle made exact comparison difficult. The log was retrieved and showed the following contents:

```
00-00-00 00:00:00 eeram loaded from flash
16-11-07 16:22:50 INTRA FW V2.19 - build of Jun 8 2016 13:45:40 hw:icb_25
16-11-07 16:22:50 initial position ok
16-11-07 16:26:04 chat,zero-0 found, eposo,1077, eerrs,0, hposo,6849, herrs,0
16-11-07 16:26:06 chat,zero-1 found, eposo,2938, eerrs,0, hposo,18697, herrs,0
16-11-08 02:34:57 chat,zero-0 found, eposo,0, eerrs,0, hposo,-2, herrs,0
16-11-08 02:34:58 chat,zero-1 found, eposo,0, eerrs,0, hposo,0, herrs,0
```

Thank you for your continued help with this project!

rw: Its great. It seems to work again. Please keep an eye on it. While its working again, we still have no clue what caused this corruption of its internal data. We will have to work on this here.